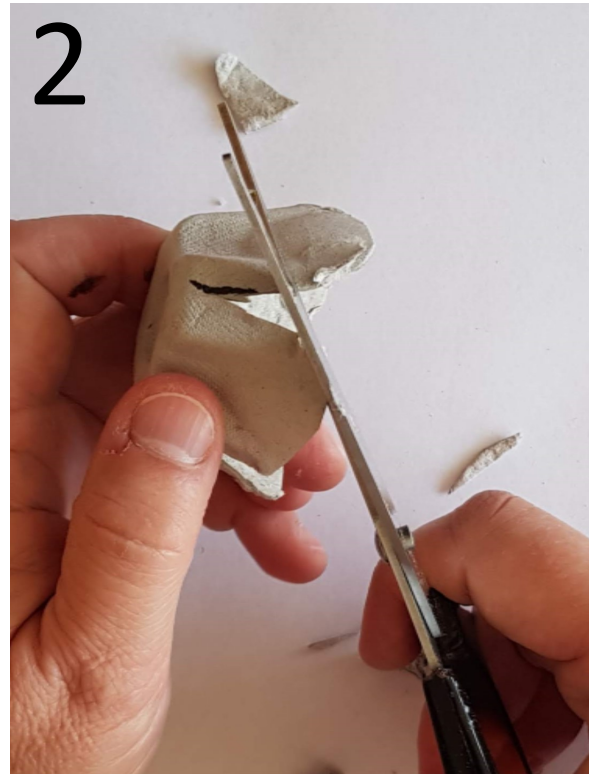


Egg Carton Poppy Instructions



You will need an egg carton, scissors, glue, red paint and black paper/paint/or permanent marker.



Cut out one egg cup section from the carton and shape four petals from it.



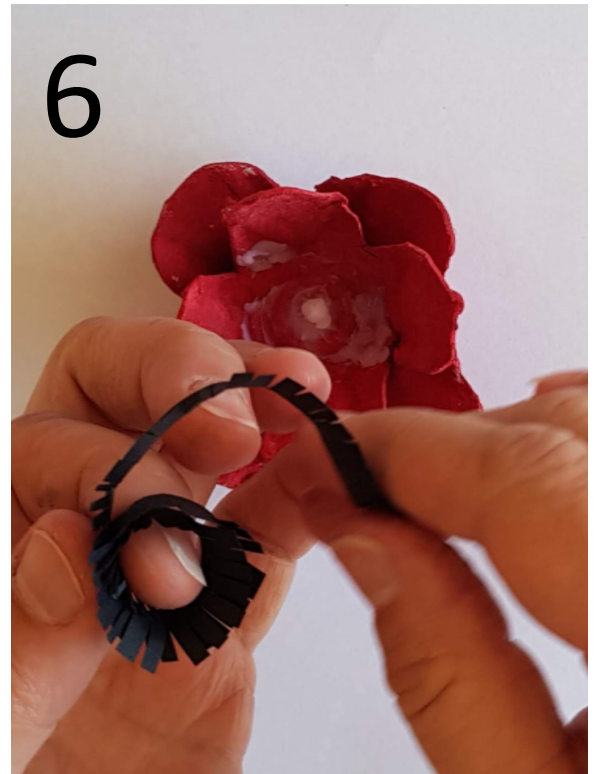
Paint with red paint and leave to dry.



Cut a strip of black paper into a fringe.
1cm wide x 20cm long.



Put glue in the bottom of the cup and twist a second cup into the first, so the inner petals fill the space between the outer petals.



Form the fringe into a spiral and bend the cut edges outwards.
Stick the fringe to the bottom of the cup.



Alternatively, use a permanent marker, paint or a circle of black paper to form the centre of the poppy.



You could make multiple poppies and form them into a wreath.