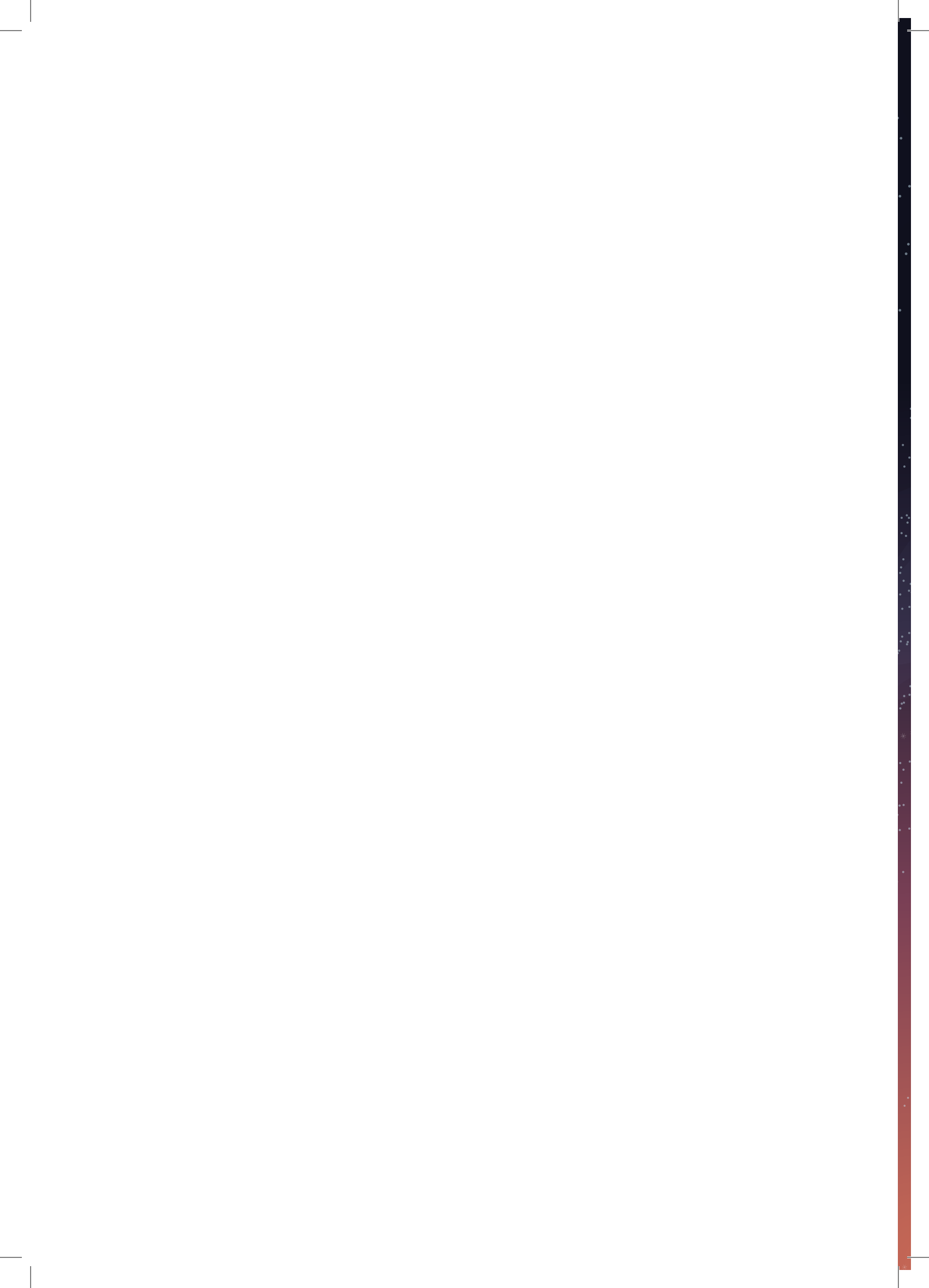


# He mahi mā Matariki me Puaka

Activities for Matariki and Puaka





# Kupu Arataki - Introduction

Kua ara ake ahau i te papa o te whenua

Kua kite ahau i ngā whetū e tūtaki tahi ana

Ko Matariki te kairūri

Ko Atutahi kei te taumata o te mangōroa

*The scope of our imagination is from the earth to the stars*

– Professor Te Wharehuia Malroy  
Kura Reo ki Te Waipounamu 2014

Matariki consists of nine stars who are associated with the natural environment and all that live within it.



Waipunarangi



Ururangi



Tupuārangi



Hiwa-i-te-rangi



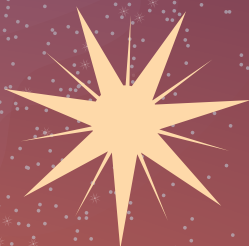
Waitī



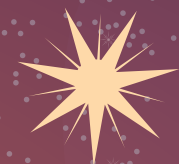
Matariki



Waitā



Pōhutakawa



Tupuānuku

# Matariki

Matariki is the Mother of the Kāhui - cluster. She is associated with health and wellbeing of people. She also is a sign of hope, reflection, our connection to the environment and people gathering.



# Pōhutukawa

She is associated with those who have passed on.



# Tupuānuku

She is associated with things that grow in the soil that are harvested or gathered.



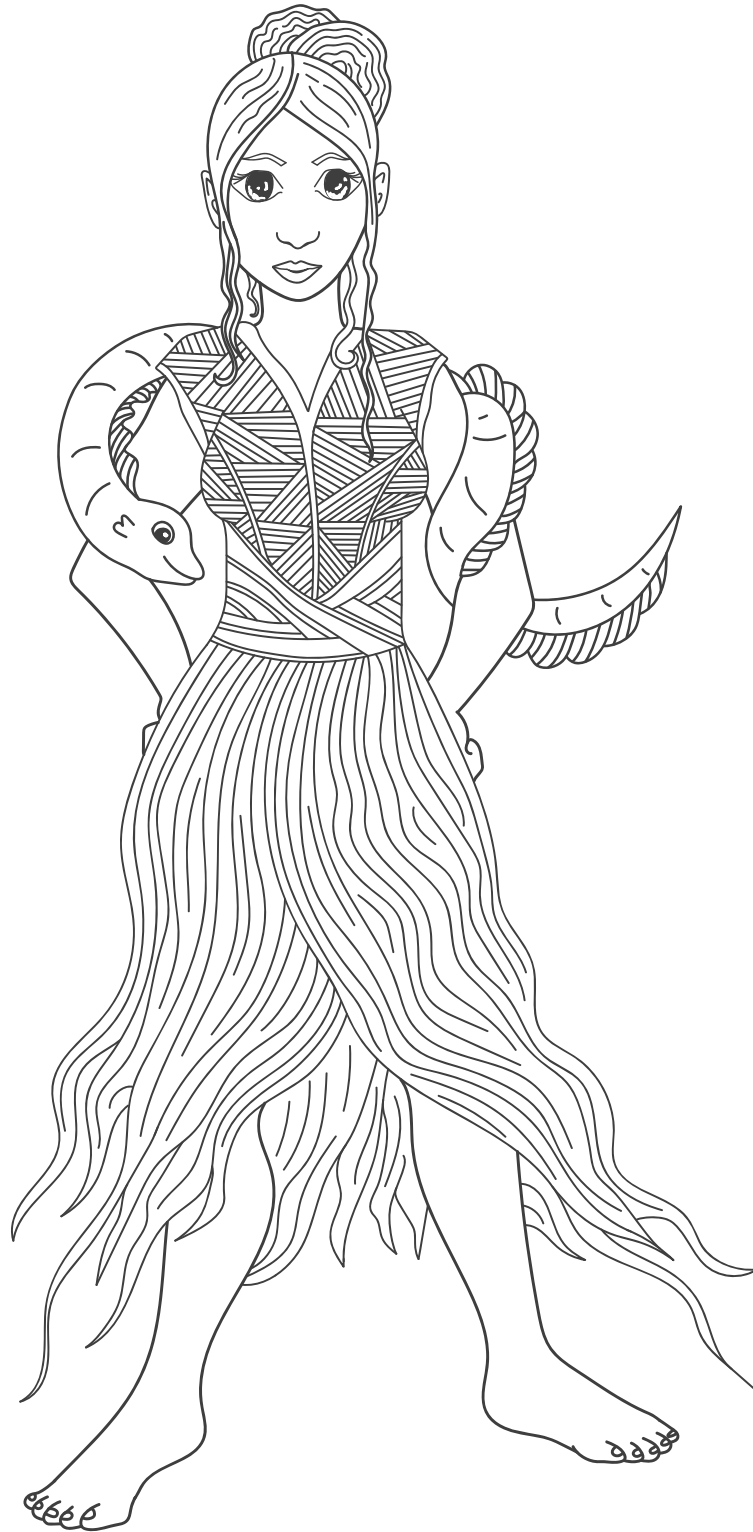
# Tupuārangi

He is associated with food that grows in trees and bushes, like fruit and also birds.



# Waitī

She is associated with fresh water groups like lakes, rivers and streams  
and all the food sources in them.





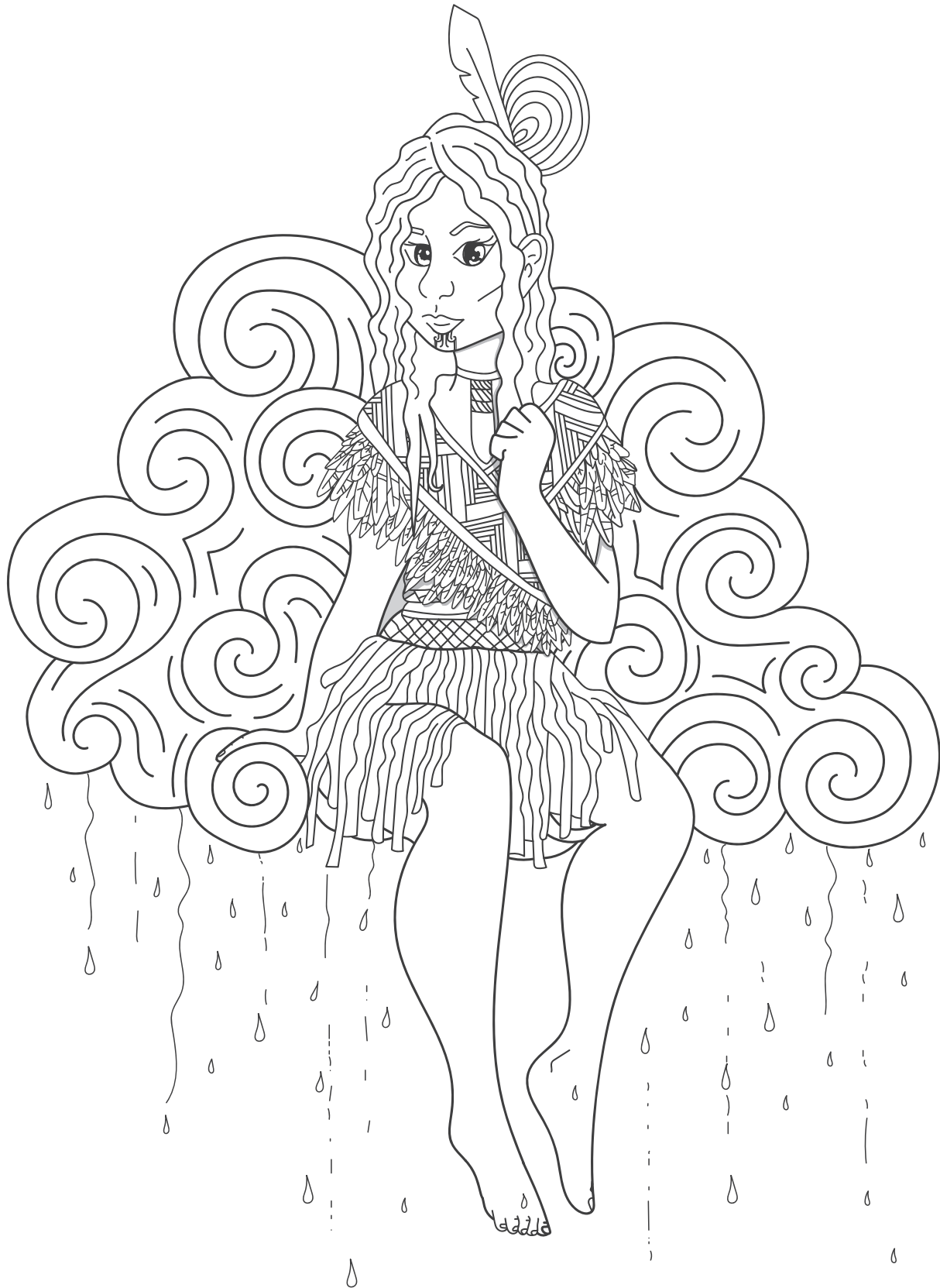
# Waitā

He is associated with the ocean and the food sources within.



# Waipunāangi

She is associated with the rain.



*Illustrations by Sofia Guillen-Ireland and Adam Nisbett*

# Ururangi

He is associated with the wind.



# Hiwa-i-te-Rangi

She is associated with aspirations and wishes for the coming year.



# Hutoku Sudoku



Using 1 to 4, write the correct number in each box.

You can use each number once in each set of 4 and on each line across and down.

<b>4</b>	<b>2</b>	<b>3</b>	<b>1</b>
<b>3</b>	<b>1</b>		
		<b>4</b>	
<b>2</b>			

<b>1</b>		<b>3</b>	<b>4</b>
<b>4</b>			
		<b>1</b>	
			<b>3</b>

<b>2</b>			
	<b>1</b>		<b>4</b>
			<b>1</b>
<b>1</b>		<b>4</b>	

	<b>4</b>		
			<b>1</b>
		<b>3</b>	<b>2</b>
<b>2</b>	<b>3</b>		

# Kupu orite

## Word match



Match the names of the Matariki stars to the correct picture.

### Tupuārangi

*Associated with food that comes from the sky and is linked to birds.*

### Pōhutukawa

*Associated with those who have passed away.*

### Hiwa-i-te-rangi

*Associated with aspirations and wishes for the coming year.*

### Waitī

*Associated with fresh water and living creatures in the rivers, streams, and lakes.*

### Ururangi

*Associated with the wind.*

### Tupuānuku

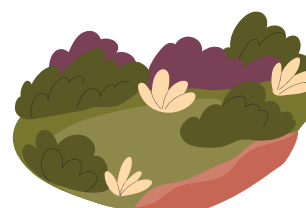
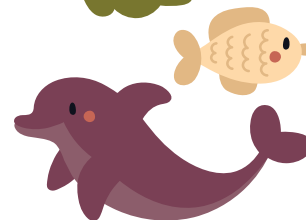
*Associated with food grown in the ground.*

### Waipunārangi

*Associated with the rain.*

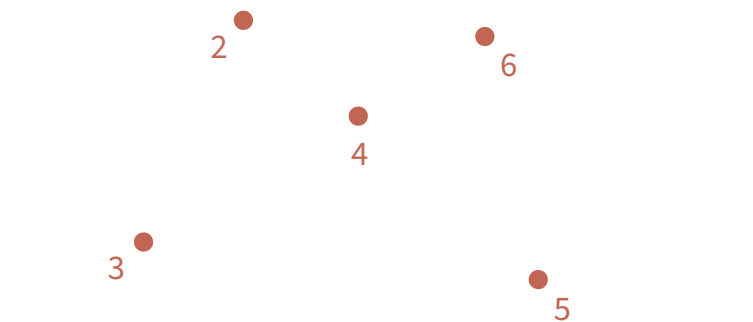
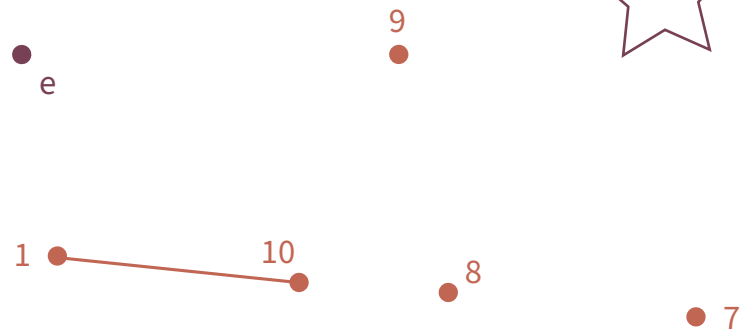
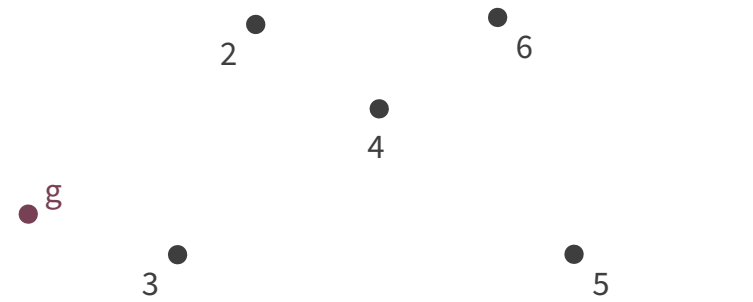
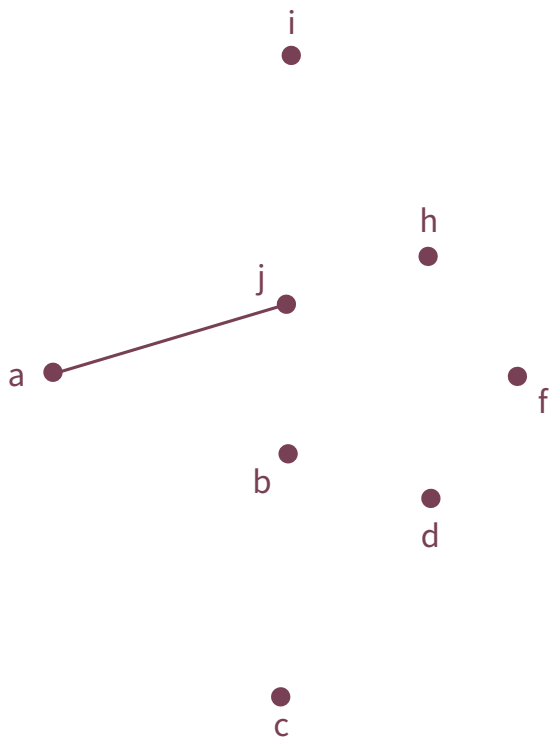
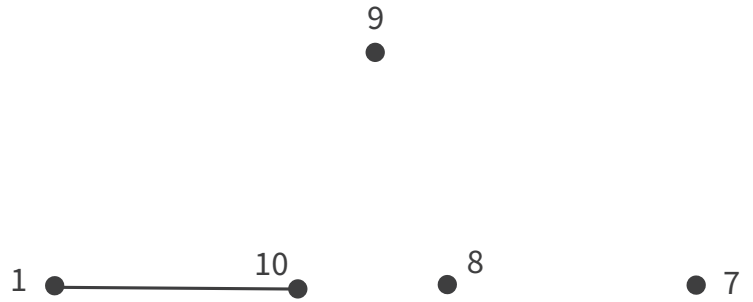
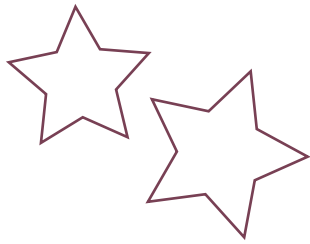
### Waitā

*Associated with the ocean and represents food gathered from the sea.*



# Hei mahi

Join the dots



# Hangarau



## Recycling

Our *moana* oceans and *arawai* waterways are becoming polluted with rubbish from the *whenua* land. We all need to do our bit to protect them and keep them clean.

Below are items to be sorted into the four bins. List what items go in each bin. If you're not sure check out [ccc.govt.nz/lookupitem](http://ccc.govt.nz/lookupitem) or Christchurch bins app.



<i>leaves</i>			
_____	_____	_____	_____
_____	_____	_____	_____
_____	_____	_____	_____
_____	_____	_____	_____

**Green bin: Organics.** Food scraps and garden waste.

**Red bin: Rubbish.** All the stuff that doesn't go into other bins including bottle, jar and container lids, dirty paper and cardboard, large containers over 4 litres (including water and oil bottles).

**Yellow bin: Recycling.** Clean plastic bottles and containers 1, 2 & 5, paper, glass bottles and jars, cardboard (including empty pizza boxes), drink cans and food cans.

**Grey bin: Soft plastics.** Collection points are at selected supermarkets or The Warehouse



# Kimi kupu

## Word search



T R A W A R U F Q A H O C Z E N R W  
 Y A M M W K O O U R A H K Q K K A V  
 J D K A A H K K G P W H E K E U B V  
 K W T U H C A A D H A E S T K K P N  
 D A A U T I L I R K K A F V E U A T  
 E C I I G A N B R O U O P C N O A W  
 P P B M T K I G A E R U R A O O T U  
 W A I K O A A K A F P O A O K K I B  
 I I A P Z A A W A K X O I K R A K K  
 J H N U I M N O A G A M E D A A I Z  
 I E Y Z A P M A Y U L I T I O G A Y  
 T U X L L B T M A T A U X D J F R L

Find the following words in the puzzle.

Words are hidden sideways, downwards and diagonally.

**AHO** (line-fishing)

**AIHE** (dolphin)

**IKA** (fish)

**KAIMOANA** (seafood)

**KARORO** (seagull)

**KAWAU** (shag)

**KEKENO** (seal)

**KORORAA** (blue penguin)

**KOOURA** (lobster)

**KUKU** (mussel)

**KUUAKA** (godwit)

**MAHINGA KAI** (natural resources)

**MATAU** (fishing hook)

**PAAPAKA** (crab)

**PAATIKI** (flounder)

**PAAUA** (abalone)

**PIPI** (shell fish)

**RAWARU** (blue cod)

**TAKUTAI** (sea shore)

**TIO** (oyster)

**WAITAA** (star associated with sea water)

**WHAIREPO** (stingray)

**WHEKE** (octopus)

# Panga tau Cryptogram



Each letter in the phrase has been replaced with a random number. Decode the message using the correct letter.

A	B	C	D	E	F	G	H	I	J	K	L	M
6								17				
N	O	P	Q	R	S	T	U	V	W	X	Y	Z
						21	3					

T                      T U                      T

21 23 5              2 21 3 9 18              12 24              21 23 5

   I                      U                      A

14 12 2 20 12 2              17 19 24 26 3 5 19 14 5              6 26 26

A                      T                      I

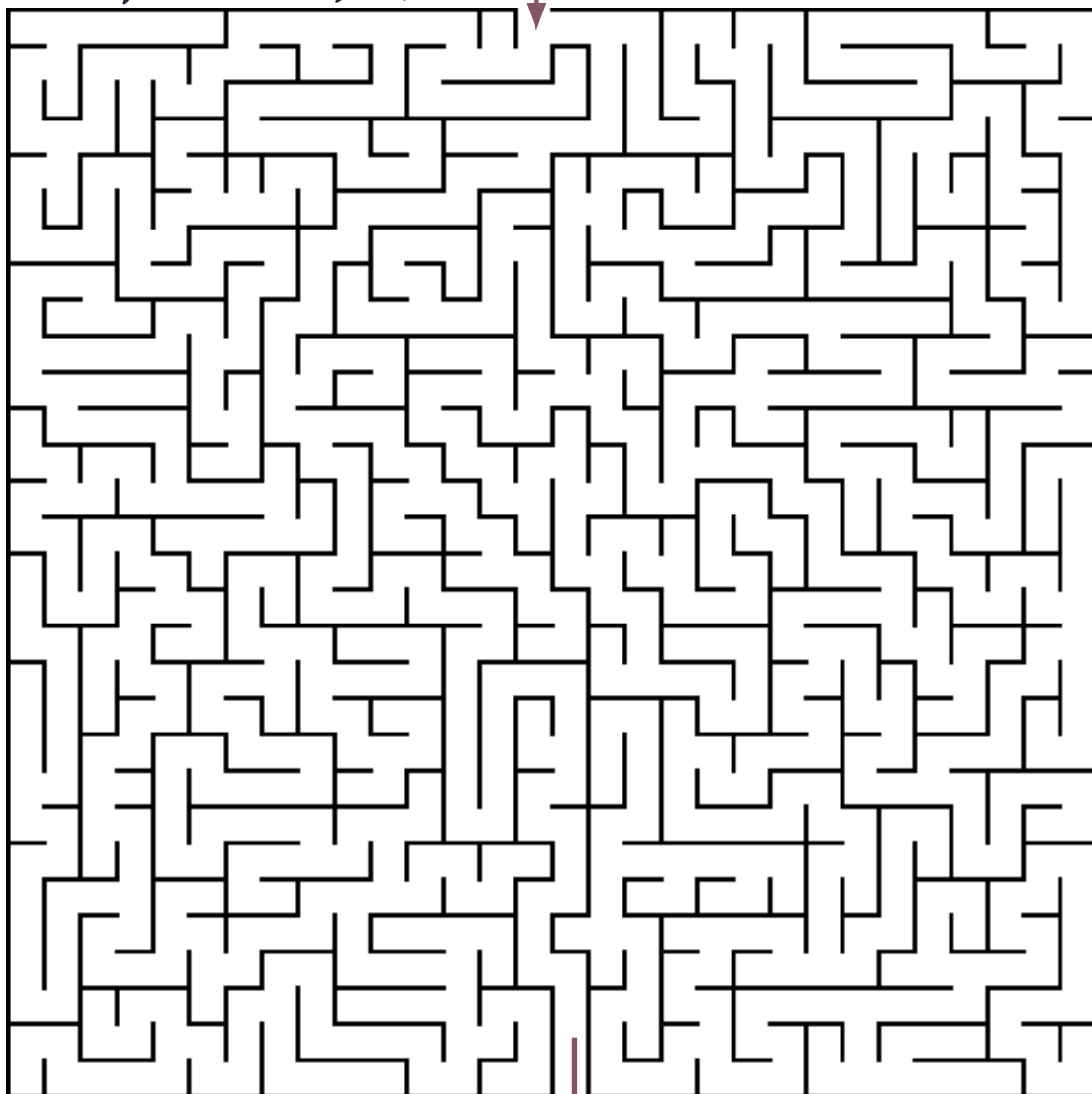
6 2 25 5 14 21 2              12 24              26 17 24 5

# Awhina mai

## Your help is required



Help this whānau to get to the Hautapu to welcome the Māori New Year.

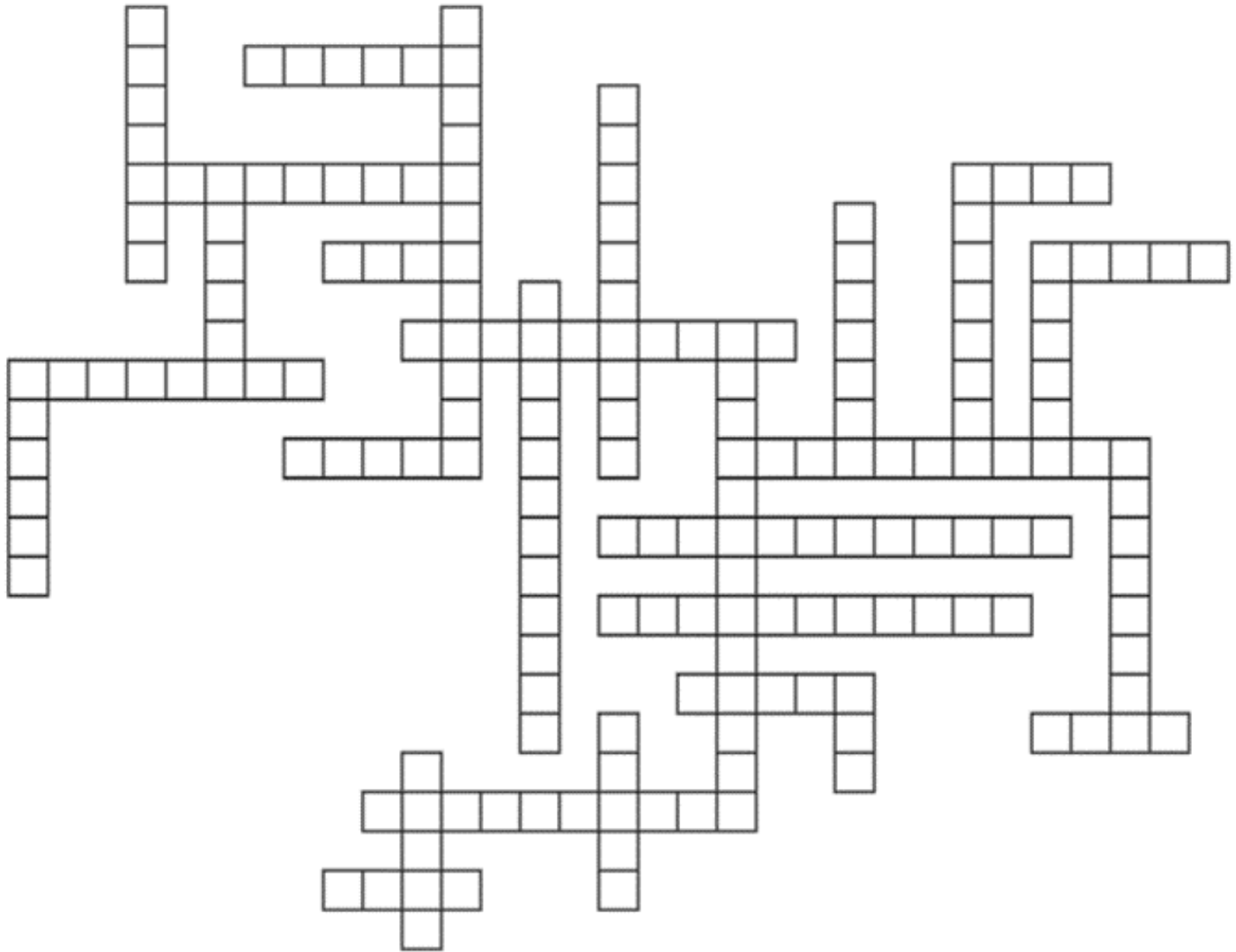


# Whawhao ngā kupu

## Word fit



Fill in this grid with the words listed below. They have been organised into the number of letters in each word. *He tīwhiri* | a clue: Start with the categories that only have one word in them.



3 Letters	5 Letters	6 Letters	8 Letters	10 Letters	12 Letters
AWA	MOANA	MOTHER	MATARIKI	MARAMATAKA	HIWAITERANGI
4 Letters	RAKAU	PIPIRI	MEMORIES	POHUTUKAWA	TAWHIRIMATEA
MANU	WAITA	PUANGA	URURANGI	TUPUARANGI	WAIPUNARANGI
RAIN	WAITI	WHANAU	9 Letters	11 Letters	13 Letters
WAKA	WHETU	7 Letters	TUPUANUKU	ASPIRATIONS	KAITIAKITANGA
WIND		CLUSTER		TARAMAINUKU	
		TAKURUA			

# Kōmiritia ēnei kupu

## Word Unscramble



Unscramble the words and then write their meaning under your answer. Clues can be found throughout this book. *He tīwhiri* | a clue: double vowels are used instead of macrons.

A good resource is Te Aka – the online Māori Dictionary

[maoridictionary.co.nz](http://maoridictionary.co.nz)

**AEWRH**

*He tīwhiri* | a clue:  
a place to live

*Meaning:* \_\_\_\_\_

**AAUGMN**

*He tīwhiri* | a clue:  
bigger than a hill

*Meaning:* \_\_\_\_\_

**AAOHUR**

*He tīwhiri* | a clue:  
not sick

*Meaning:* \_\_\_\_\_

**GHAROENIN**

*He tīwhiri* | a clue:  
where thoughts come from

*Meaning:* \_\_\_\_\_

**AAWANM**

*He tīwhiri* | a clue:  
pumps blood in our body

*Meaning:* \_\_\_\_\_

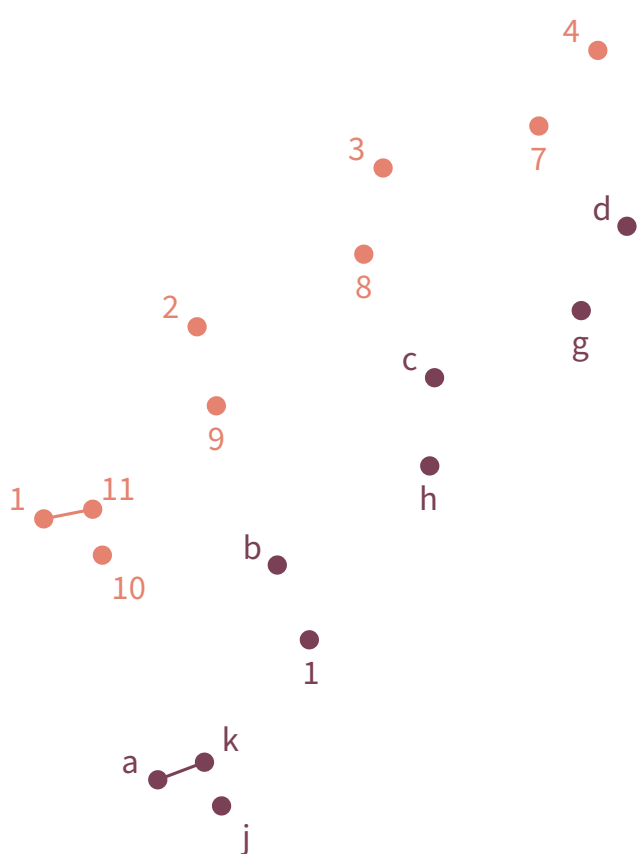
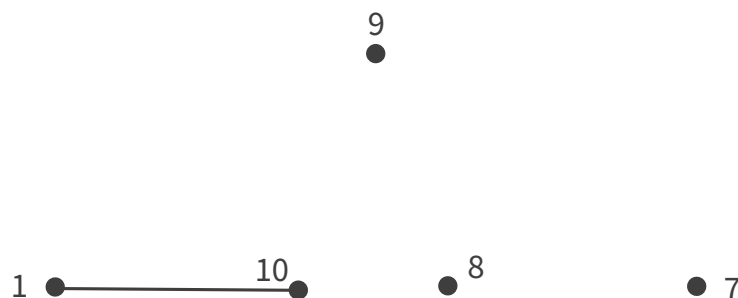
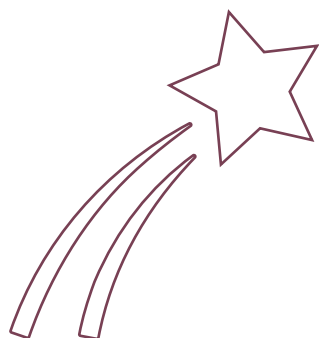
**NEHAAKW**

*He tīwhiri* | a clue:  
opposite of shrink

*Meaning:* \_\_\_\_\_

# Hei mahi

Join the dots



# Kōmiritia ēnei kupu

## Word Unscramble



Unscramble the words and then write their meaning under your answer. Clues can be found throughout this book. *He tīwhiri* | a clue: double vowels are used instead of macrons.

A good resource is Te Aka – the online Māori Dictionary

[maoridictionary.co.nz](http://maoridictionary.co.nz)

**UUKKUUTT**

*He tīwhiri* | a clue: normally found  
in a Māori meeting house

*Meaning:* \_\_\_\_\_

**AAAUUUPKR**

*He tīwhiri* | a clue:  
a type of legend

*Meaning:* \_\_\_\_\_

**AAUAPPHK**

*He tīwhiri* | a clue:  
it makes the ground cold and hard

*Meaning:* \_\_\_\_\_

**OOATNIRUG**

*He tīwhiri* | a clue:  
drops falling

*Meaning:* \_\_\_\_\_

**AANUURTG**

*He tīwhiri* | a clue:  
Christchurch City Library name

*Meaning:* \_\_\_\_\_

**OOOHHI**

*He tīwhiri* | a clue:  
a farm animal

*Meaning:* \_\_\_\_\_

# Pangakupu Crossword



To complete this Crossword you need to find the Māori word for each clue.  
*He tīwhiri* | a clue: double vowels are used instead of macrons

A good resource is Te Aka – the online Māori Dictionary

[maoridictionary.co.nz](http://maoridictionary.co.nz)

**Across →**

2. Food
5. Book
7. Grows on a tree, good for your teeth
9. Star
10. River
11. Dog
13. Potato
15. Land
16. Something to sit on
17. To bury

**Down ↓**

1. Bird
3. Song
4. The moon
6. To cook
8. Tree or stick
9. Red
12. Swims in water
14. A house
16. Boy
18. Rain



# Kōmiritia ēnei kupu

## Word Unscramble



Unscramble the words and then write their meaning under your answer. Clues can be found throughout this book. *He tīwhiri* | a clue: double vowels are used instead of macrons.

A good resource is Te Aka – the online Māori Dictionary

[maoridictionary.co.nz](http://maoridictionary.co.nz)

### AARMATAMKA

*He tīwhiri* | a clue:  
Māori lunar-solar calendar

*Meaning:* \_\_\_\_\_

### ARUOHA

*He tīwhiri* | a clue:  
well-being

*Meaning:* \_\_\_\_\_

### AOTUTOIHA

*He tīwhiri* | a clue:  
the Garden City

*Meaning:* \_\_\_\_\_

### AWAUHAN

*He tīwhiri* | a clue:  
your family

*Meaning:* \_\_\_\_\_

### AUKRAA

*He tīwhiri* | a clue:  
a piece of a tree

*Meaning:* \_\_\_\_\_

### AMIITRAK

*He tīwhiri* | a clue:  
a group of children

*Meaning:* \_\_\_\_\_

# Kupu orite

## Word match



Translate the word, then match it to the correct picture.

### Kamupūtu

*He tīwhiri | a clue: they are good to use in the rain.*

### Hū

*He tīwhiri | a clue: they come in a pair.*

### Karu whātata

*He tīwhiri | a clue: you can see the universe with one of these.*

### Poihau

*He tīwhiri | a clue: these are great at a party but are loud when they pop.*

### Ngeru/Naki

*He tīwhiri | a clue: I'm furry and I'm sometimes purring.*

### Reti Kōpaka

*He tīwhiri | a clue: they are used on ice.*

### Mokouki

*He tīwhiri | a clue: they are now extinct.*

### Pihi Makaurangi

*He tīwhiri | a clue: a mythical, magical horse.*



# Waehere urupare



Scan the QR codes to find out more information about Matariki.



[matariki.com](http://matariki.com)



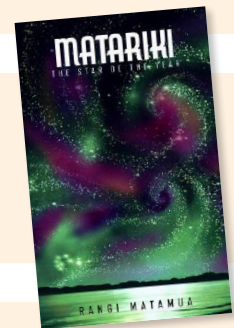
**Matariki** te whetū tapu o te tau  
by Rangi Matamua

[christchurch.bibliocommons.com/v2/record/S37C996989](http://christchurch.bibliocommons.com/v2/record/S37C996989)



**Matariki** The star of the year  
by Rangi Matamua

[christchurch.bibliocommons.com/v2/record/S37C973752](http://christchurch.bibliocommons.com/v2/record/S37C973752)



**Delve deeper into the stars of Matariki**

[livingbythestars.co.nz](http://livingbythestars.co.nz)



**Te Iwa o Matariki poster**

[issuu.com/tewanangaoaotearoa/docs/matariki1\\_lowenglish](http://issuu.com/tewanangaoaotearoa/docs/matariki1_lowenglish)



**Matariki Te Whetū o te Tau**

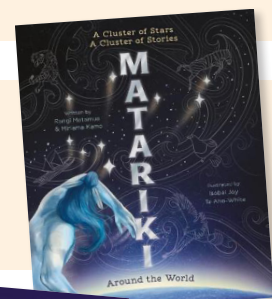
Dr Rangi Matamua and Living by the Stars & CORE Education

[youtube.com/@LivingbyTheStars](http://youtube.com/@LivingbyTheStars)



**Matariki Around the World** A Cluster of Stars,  
a Cluster of Stories by Rangi Matamua

[christchurch.bibliocommons.com/v2/record/S37C1304212](http://christchurch.bibliocommons.com/v2/record/S37C1304212)



**Flit the Fantail and the Matariki Map**  
by Katherine Merewether

[christchurch.bibliocommons.com/v2/record/S37C1231358](http://christchurch.bibliocommons.com/v2/record/S37C1231358)





# Pouaka wawata

## A wishing box



Design and make your own Matariki wishing box.

Place your wish for the coming year in it, then seal it for Hiwa-i-te-Rangi to help you achieve.

