

Dec 2024–Feb 2025

# What's on in your library

Programme and event guide

---

Stories come to life  
at the library.

**Nau mai, tauti mai.**

## Kia ora koutou



As we look forward to summer, with warm weather and holiday fun with our whānau and friends, I'd like to thank you for your continued support of our libraries during 2025. Whether you're discovering new books, attending programmes, or simply enjoying library spaces, we're honoured to be part of your summer experience.

For children, we encourage you to enter the Summertime Reading Challenge which is a great way to keep your reading habit alive over the holidays, and there are some awesome prizes available too.

If you are travelling over summer and packing light, dip into our huge collection of eBooks and eAudio for stories on the go, wherever you are.

If you haven't checked it out yet, you might like to visit Matatiki in Hornby, Council's newest facility with a great library, creative space and fantastic swimming pools!

Please don't be shy about placing holds now there are no charges on reserving library material. We are delighted to see a big increase in the number of holds since charges were removed in July this year.

Whatever your plans, we hope this season brings you both relaxation and inspiration, and we look forward to welcoming you back throughout the summer for more great reads and events.

Wishing you a wonderful and enriching summer!

**Carolyn Robertson**

*Head of Libraries and Information*



# What's the story?

|                          |    |
|--------------------------|----|
| All about whānau         | 5  |
| Holiday fun              | 11 |
| After school clubs       | 16 |
| Youth programmes         | 19 |
| Lunar New Year           | 22 |
| Authors and books        | 26 |
| Summertime Reading       | 29 |
| Creative and connected   | 34 |
| eKnow how                | 40 |
| Christmas at the Library | 44 |
| Heritage                 | 46 |
| Exhibitions              | 51 |

## Are you part of the Children's University?

Did you know you could be earning learning hours by going along to any of our library-run programmes?

Visit [cuaustralasia.com](http://cuaustralasia.com) for more information on this project and how you can get involved.



## How to book:

Unless otherwise stated, our events are free, open to all ages, and no bookings are required.

When you do need to book a place:



### Online:

Find the event listing at **christchurchcitylibraries.com** and follow the instructions to book and (where applicable) pay online.



### In person:

Go to your local library and staff will book on your behalf.



### By phone:

03 941 7923

Paid events will incur a booking fee.

For more information visit:

[my.christchurchcitylibraries.com/contact-us](https://my.christchurchcitylibraries.com/contact-us)

For library locations please visit:

[christchurch.bibliocommons.com/locations](https://christchurch.bibliocommons.com/locations)

### Important:

Please check our website for the latest information before attending any event.

# All about whānau



[christchurchcitylibraries.com](http://christchurchcitylibraries.com)

# Wā Pēpi–Babytimes



2 years and under

Programmes include stories, music, movement and rhymes. Kōrero pukapuka, pūoru, korikori.

Most programmes run during school terms only.

|  |                     |
|--|---------------------|
| Akaroa Library   | Fridays, 10.15am    |
| Aranui Library   | Tuesdays, 10.30am   |
| Fendalton Library  | Thursdays, 10.30am  |
| Linwood Library  | Fridays, 11am       |
| Lyttelton Library  | Thursdays, 10.30am  |
| Matatiki Hornby Centre                                   | Fridays, 10.15am    |
| Matuku Takotako:<br>Sumner Centre                        | Fridays, 10.30am    |
| New Brighton Library                                     | Wednesdays, 10.30am |
| Ōrauwhata:<br>Bishopdale Library and<br>Community Centre | Fridays, 10.30am    |
| Papanui Library  | Wednesdays, 11am    |
| Parklands Library  | Fridays, 10.30am    |
| Shirley Library  | Thursdays, 10.30am  |
| South Library  | Thursdays, 11am     |
| Spreydon Library   | Wednesdays, 10.30am |
| Te Hāpua:<br>Halswell Centre                             | Wednesdays, 11am    |
| Tūranga  | Mondays, 10.30am    |
| Upper Riccarton Library                                  | Tuesdays, 10am      |

# Wā Kōrero–Storytimes



2 years and over

Programmes include stories, music, movement and rhymes.  
Kōrero pukapuka, pūoru, korikori.

Most programmes run during school terms only.

|  |                     |
|--|---------------------|
| Fendalton Library  | Tuesdays, 10.30am   |
| Linwood Library  | Thursdays, 10am     |
| Lyttelton Library  | Tuesdays, 11am      |
| Matatiki Hornby Centre                                   | Wednesdays, 10.15am |
| Matuku Takotako:<br>Sumner Centre                        | Wednesdays, 10.30am |
| New Brighton Library                                     | Tuesdays, 10.30am   |
| Ōrauwhata:<br>Bishopdale Library and<br>Community Centre | Wednesdays, 10.30am |
| Papanui Library  | Thursdays, 11am     |
| Parklands Library  | Thursdays, 10.30am  |
| Redwood Library  | Fridays, 10.30am    |
| Shirley Library  | Wednesdays, 10.30am |
| South Library  | Tuesdays, 11am      |
| Spreydon Library   | Fridays, 10.30am    |
| Te Hāpua:<br>Halswell Centre                             | Thursdays, 11am     |
| Tūranga  | Wednesdays, 10.30am |
| Upper Riccarton Library                                  | Mondays, 10am       |



## Bilingual Storytimes

Come along for bilingual storytimes! All welcome.

For tamariki aged 2 to 5 years.

### Ngā Pakiwaitara

Te Reo Māori

#### Tūranga

Hapori | Community, Level 1

Tuesdays (term time only), 10.30am

### Mandarin Storytimes

#### Tūranga

Activity Room / Hapori | Community, Level 1

Saturday 14 December, 11am–11.30am

## Bedtime Stories at Fendalton

Dress up in your PJs and come along to enjoy themed stories, songs, and simple crafts.

All welcome

Best enjoyed by ages 4–7 years

#### Fendalton Library

First Friday of the month,

6.30pm–7.30pm



## Saturday Storytimes

Have you missed our normal Wā Kōrero-Storytimes? Join us for stories, songs, rhymes, crafts, eResources and fun on Saturdays!

#### Shirley Library

First Saturday of the month, 10.30am–11.30am

#### Te Hāpua: Halswell Centre

First Saturday of the month, 11am–noon

#### Matatiki Hornby Centre

Saturday 25 January, 10.30am–11am

(outside, weather permitting)





## Wā Kōrero – Whānau Storytimes

Bring the whānau for stories, songs and rhymes.

### Tūranga

Hapori | Community, Level 1  
Sundays, 10.30am–11am



## Family Makerspace

Have fun, create, craft and make cool stuff with a different activity every week.

### Tūranga

Hapori | Community, Level 1  
Saturdays, 2.30pm–3.30pm

## CSO Music Trails through the Libraries

These free 45-minute performances are a fun way to introduce young people to live music and instruments. Performances may also contain dance, song and stories.

### Te Hāpua: Halswell Centre

Friday 28 February, 10.30am



## Sensory Hour

An opportunity for people with sensory sensitivities to relax and enjoy the library in a safe and welcoming space. Environmental stimulants will be reduced and sensory toys will be available.

### Tūranga

Hapori | Community, Level 1  
Mondays, 6pm–7pm

### Redwood Library

Mondays, 5pm–6pm



## Linwood Gardening Club

Come and join us for an informal get-together with other gardening enthusiasts to discuss all things gardening. Whether you're a beginner, home gardener or an experienced professional, all are welcome!



### Linwood Library

First Monday of the month, 1.30pm–2.30pm

## Brick your Book

Do you love Lego? Come to the Library to build and play and celebrate International Lego Day at a pop-up Imagination Station.

Get the whānau together, and use our Lego or yours to recreate a scene or character from your favourite book. What if Alice had Adventures in Legoland? Is there Room for bricks on the Broom? Would Mowgli find the Bare Necessities in The Jungle Brick? Take a photo of your creation and enter online or at the library.

### Pop up Imagination Stations

Te Hāpua: Halswell Centre, Papanui Library,  
Ōrauwahata: Bishopdale Library and  
Matatiki Hornby Centre  
27 January – 4 February

### Special Giant LEGO

Spreydon Library  
28 January – 4 February



## Mā te Wā

Join us for a month-long celebration at South Library! We invite you to share your cherished memories and heartfelt messages on our wall and windows. Whether it's an anecdote, a drawing, or a simple note of gratitude, your contributions will help us honour the connections and opportunities that South has provided.

We can't wait to see what you create!

### South Library

1–31 December

# Holiday fun



[christchurchcitylibraries.com](http://christchurchcitylibraries.com)

# School Holiday drop-in fun

Check where and when at

[christchurchcitylibraries.com](http://christchurchcitylibraries.com)

## Handmade Holidays

DIY a designer gift bag



## Roar into Christmas!

Design a dino-mite  
decoration



## Fly into summer!

Let your imagination  
take flight



## Mirrored Monster Mayhem

Cut out your own  
cute creature



## Express yourself!

Get your message  
across



## Day of Dragons

In celebration of “Appreciate a Dragon Day”, Shirley Library is organising and hosting a variety of dragon-themed educational and recreational activities. These multifaceted events are designed to be fun and suitable for people of all ages and backgrounds. Activities will include a colouring competition, a storytelling session, crafts, readings, a scavenger hunt, games, and creative technology workshops.

### Shirley Library

Friday 17 January

10.30am–11.30am: Dragon-themed Storytelling and Craft

Noon–1pm: Dragon Origami

1pm–2pm: Dragon Badge Making

1pm–2pm: Dragon Board Games

2pm–3pm: Dragon bookmark with your Dragonese names

2pm–5pm: Dragon T-Shirt Workshop

3pm–5pm: Dragon VR Games



## Teddy Bears Picnic

Bring your teddy bear for a fun teddy bears picnic. Listen to our stories, sing some songs and make your own teddy bear mask.

### Bishopdale Park

(Ōrauwhata : Bishopdale Library if wet)

Tuesday 21 January, 10.30am–11.30am

## Recycled Racing Cars

Drop in to Shirley Library to make a racing car out of recycled materials, then get together with friends and whānau to race your cars down the ramp.



### Shirley Library

See web calendar for more details.

## Window Art

Need a break from the sun? Come and create some window art by the sea.

**Free, no booking required**

### New Brighton Library

Thursday 9 January, 2pm–4pm



# Holiday Programmes

Bookings open Thursday 19 December, 7pm

## Reflect & Ride Workshop: Design Your Own Custom Safety Vest!

Imagine designing your very own bike safety vest with custom reflective vinyl!

Use basic digital art skills to design and cut reflective vinyl for a safety vest. Heat press it onto the vest, then take it home and ride safely in style on your next bike adventure!

**Ages 8–12 years**

**\$25, booking required; safety vests provided.**

### **Matatiki Hornby Centre**

Wednesday 15 January, 1pm–3.30pm

Monday 20 January, 10.30am–1pm

### **Te Hāpua: Halswell Centre**

Tuesday 21 January, 10am–12.30pm and 1.30pm–4pm

### **Tūranga**

Monday 13 January, 1pm–3.30pm

## Minecraft Build Challenge

Join us for a two-hour Minecraft Build Challenge these Summer School Holidays! Unleash your creativity, build amazing structures, and make new friends.

Basic game knowledge and ability to use a mouse and keyboard required.

**Ages 8–12 years**

**\$10, booking required**



### **Matatiki Hornby Centre**

Monday 13 January, 10am–noon and 2pm–4pm

Wednesday 22 January, 1pm–3pm

### **Te Hāpua: Halswell Centre**

Friday 17 January, 10am–noon and 1.30pm–3.30pm

Thursday 23 January, 10.30am–12.30pm

### **Tūranga**

Tuesday 21 January,

10.30am–12.30pm and 1.30pm–3.30pm

Thursday 23 January, 1.30pm–3.30pm

## Door Décor

Come and design your own personalized sign to hang on your door!

Choose a font, watch your sign be laser cut, then assemble and colour. You will leave with an original sign of your own.

**Ages 5–12 years**

**\$5, booking required**

### Matatiki Hornby Centre

Wednesday 15 January, 11am–noon

Friday 17 January,

10.30–11.30am, 12.30pm–1.30pm and 2pm–3pm

Monday 20 January, 2.30pm–3.30pm

Wednesday 22 January,

10am–11am and 11.30am–12.30pm

### Tūranga

Monday 13 January, 10.30am–11.30am

Wednesday 15 January,

11.30am–12.30pm and 1.30pm–2.30pm

Thursday 23 January, 10.30am–11.30am



## Design your own Library Bag

Create your own design to be printed onto a tote bag with our Direct to Garment printer. You can bring your design with you or create one on the day. A tote bag will be supplied.

Please note: if an adult is accompanying a child then only one booking is required.

**\$10, booking required**

### Te Hāpua: Halswell Centre

Auahatanga Creative Space

Wednesday 29 January, 2pm–3.30pm



## Creative Cartography

If you have ever wondered how to create those sprawling fantasy maps you see at the beginning of your favourite books, then wonder no longer.

Come down to the library and learn how to draw your own fantasy map from scratch to create a new world like those of Middle Earth, Narnia and Eragon.

**Ages 9–16 years**

**Free, booking required**

### Shirley Library

Tuesday 7 January, 2pm–3.30pm



# After school clubs



## After School Activity Zone

We have a number of drop-in after school clubs happening across our network of libraries.

Join us for a variety of activities including technology, crafts, and games in a fun learning environment.

**All whānau welcome!**

Check our website for more details on where and when.

[christchurchcitylibraries.com](http://christchurchcitylibraries.com)



# After school clubs and programmes

All of our after school programmes run during the school term only (excluding public holidays) and begin in the second week of each term. We run a number of fun technology-based after school clubs in our libraries.

Visit [christchurchcitylibraries.com](http://christchurchcitylibraries.com) events calendar for Term 1 dates and locations.

## Minecraft Mondays

Drop in and enjoy a Minecraft session!

### New Brighton Library

Mondays, between 3.30pm–4.30pm

## Minecraft Club

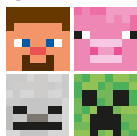
Join us at Aranui Library to explore the creative world of Minecraft. Build your own virtual world and navigate the ever-changing Minecraft landscape with fellow gamers!

To really enjoy the game you need a basic understanding of Minecraft.

**Free, online booking required**

### Aranui Library

Thursdays, 3.30pm–4.30pm during term time



## Gamezone @ Linwood Library

We welcome all tamariki to Linwood Library for our weekly crafts and games zone! Come enjoy a variety of colouring, crafts, and games with your local librarians – we do a different activity every week.

**Ages 4–12**

**Free, no booking required**

### Linwood Library

Thursdays, 3.30pm–4.30pm during term time

## Reading to Dogs

Help kids practice reading aloud and develop a love of stories with this super popular programme! This is a partnership between us and the Animal Management Team.

**Free, booking required**

**See website for details**



# WHO WANTS TO LEARN HOW TO CODE?

Find out more at

[christchurchcitylibraries.com](http://christchurchcitylibraries.com)



## Code Club @ Shirley Library

Dive into the exciting world of coding and create your own games, music, and art with Scratch. Join the fun at our club, share your creations with friends and family and receive a certificate from Code Club Aotearoa. Discover the magic of coding: Register today!

Basic computer skills required.

**Ages 9–11 years**

**Free, booking required**

**Shirley Library**

Thursdays, 3.45pm–5.15pm



## Sustainable Crafts

Join us for a casual, drop-in craft session for the whole whānau. Each week will be a different activity, but all of them will be a great chance for kids and their caregivers to work together on a planet-friendly project.

**Ages 6–12 years**

**New Brighton Library**

Tuesdays, 3.30pm–4.30pm



# Youth programmes



[christchurchcitylibraries.com](http://christchurchcitylibraries.com)

## Make (Y)our Space Competition

Design, draw and paint artworks to be displayed on the Papanui Library windows!

Artworks to be themed/inspired by Aotearoa flora and fauna and Te Kete Wānanga o Papanui – Papanui Library’s cultural narrative.

All entries will be digitised and exhibited in the library on a Max Hub screen.

For further competition details, entry form, artwork size and judging criteria please visit [christchurchcitylibraries.com](http://christchurchcitylibraries.com)

Entries  
are open from  
Sunday 1 Dec –  
Friday 20 Dec

Enter at Papanui Library. Open to ages 12–18 years

## Antisocial Social Club

Manga enthusiasts unite! Express yourself through different creative outlets and enjoy some kai with other likeminded rangatahi! This is a safe place for teens to get involved with various crafts and make connections. Come hang out!

Ages 11–18 years

### Linwood Library

First Friday of the month, 3.30pm–5pm

## Zine Club

This is an inclusive club, open to intermediate and high-school aged students. Arrive anytime from 3pm and stay as long as you can. During Zine Club you can learn about different zine-making techniques, meet other creators, and enjoy some arts and crafts. Whether you’re a poet, artist, photographer or none of the above – there’s a zine in you!

### Upper Riccarton Library

Thursdays, 3pm



## Kawai Club

Kawai Club is a fun, interactive session with treats and crafts for our rangatahi to enjoy!

The crafts are shaped by you! Let us know the kinds of things you'd like to create, and you might see them next session. Whether it's badge-making, bracelets, or advanced colouring, we can find something for everyone.

Come along and hang out in our youth space and bring your friends.

**Ages 12+ years**

### Linwood Library

Wednesdays, 3pm–4.30pm during term time.

## Thursday Takeover @ Tūranga

It's all yours! Wāhi Rangatahi/ Youth Space is your space for VR, board games, crafts and much more. We've got good things happening every Thursday, so come hang out at Tūranga and own the Youth Space.



### Tūranga

Wāhi Rangatahi/Youth Space,  
Hapori | Community, Level 1, Tūranga  
Thursdays, 3.30pm–4.30pm (during term time only)

## Thursday Takeover @Te Hāpua: Halswell Centre

Teens/YA – take over your space! The computer lab and creative space are booked for you! Get on our HTC Vive 2 VR PC and play some Job Simulator, Beat Saber or Vacation Simulator and heaps more. Draw with Apple Pencils, play some Minecraft, or get your designs printed on stickers or a t-shirt. We have different activities and technology available every week.

**Ages 12+ years**

### Te Hāpua: Halswell Centre

Thursdays, 3.30pm–4.30pm (during term time only)

# Lunar New Year

## Year of the Snake

1-15 February 2025



## Lunar New Year Celebration of Culture

A spectacular display of colours, costumes, music and performances to welcome the **Year of the Snake**. In addition, there are many traditional crafts and activities after the show. You are welcome to come in your traditional clothing.

**All ages welcome**

**Free, no booking required**

### Tūranga

Tautoru / TSB Space, Hapori | Community, Level 1  
Saturday 1 February, 1pm–4pm

## Dumpling Demonstration Workshop

Do you love eating dumplings? Do you know how to make them?

Come on in to Tūranga and let us demonstrate using different techniques how to fold and make some Chinese dumplings, ranging from incredibly easy up to the classic pleats.

**\$10, booking required**

### Tūranga

Hapori | Activity Room  
Saturday 1 February, 10.15am–11am  
Saturday 1 February, 11.15am–noon

## Lion Dance Workshop

Come and find out how Lion Dance works!

This workshop will be delivered jointly by the well-known Qiao Yi Lion Dance Team and Christchurch City Libraries staff.

You will learn how to make a lion head with recycled materials, the basic movements and participate in a fun lion dance performance.

**Ages 9–16 years**

**Free, booking required**

### Upper Riccarton Library

Saturday 15 February, 10am–noon



## Family Celebration

Bring peace and joy in the Lunar New Year with the Year of the Snake. Come and enjoy a variety of Chinese traditional games, Shadow Puppet Making and Storytelling, Chinese Chess and more themed activities.

**All ages welcome**

**Free, no booking required**

**Upper Riccarton Library**

Saturday 15 February, 1pm–3pm

## Bedtime Stories

To join the Lunar New Year 2025 celebration season, come along to our special bedtime stories at Fendalton Library. Enjoy wonderful stories and themed activities.

**All ages welcome**

**Free, no booking required**

**Fendalton Library**

Friday 7 February, 6.30pm–7.30pm



## Bilingual Storytimes

Celebrate the Lunar New Year with our special bilingual storytimes.

Join us and celebrate the Year of the Snake with Christchurch City Libraries.

**All ages welcome**

**3–14 February. Please see website for details.**

## Afterschool Activities

Don't miss this rare opportunity to experience crafts and activities. Have fun with your friends and whānau in this special season of celebration.

**Free, no booking required**

**Please see website for details.**





## Lion Dance Storytelling

Come and join Lion Dance Storytelling!

Learn how to dress up in the Lion Dance costumes, the basic movements and participate in a fun lion dance performance.

**Free, no booking required**

### Shirley Library

Wednesday 5 February, 4.30pm–5.30pm

## Lunar New Year

### Shadow Puppet Storytelling

Come and join us to enjoy a traditional Shadow Puppet Story. A sensory experience for the whole family.

**All ages welcome**

### Tūranga

Saturday 8 February, 1.30pm – 2.30pm

## Lunar New Year Family Makerspace

Celebrate the Year of the Snake and make your own Lunar New Year shadow puppet to tell a story with your family.

**Free, all ages welcome**

### Tūranga

Hapori | Community, Level 1

Saturday 8 February, 2.30pm–3.30pm

## Learn how to play Chinese Chess

Come celebrate Lunar New Year by learning how to play Chinese favourite pastime, Chinese Chess! It's open for beginners and no Chinese Chess or Chinese characters know-how necessary. Come by yourself or with a friend and enjoy this brain training game.

**Age 13+ years**

**Free, no booking required**

### Tūranga

Hapori | Community, Level 1

Tuesday 11 February, 2pm–4pm

### Upper Riccarton Library

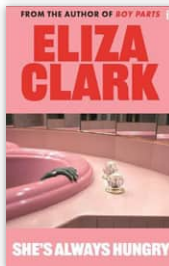
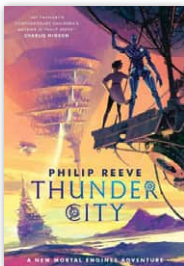
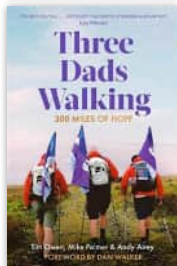
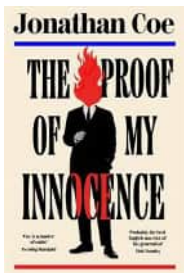
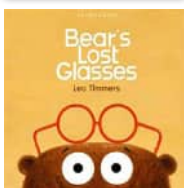
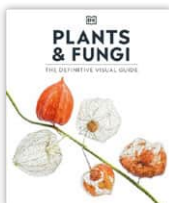
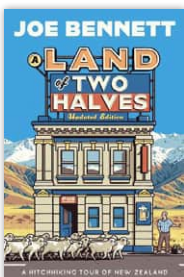
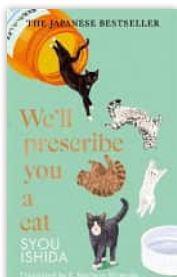
Saturday 15 February, 1pm–3pm

### Hornby Library

Tuesday 4 February, 2pm–4pm



# Authors and books



# Library-run Book Clubs

Love sharing your favourite reads? Come and join other book lovers in a supportive and relaxed environment. We currently have several casual book clubs across the city. Visit our website or call 03 941 7923 to find one near you.

## Book Discussion Scheme

BDS is a national non-profit which lends books and provides professional discussion notes to book groups. Small groups are held in libraries and led by a librarian, with a new book provided each month to all members.

A subscription fee is required.



**Visit our website for details.**

## BDS ESOL Book group

Groups for ESOL learners are offered at Tūranga. Read a short book especially designed for ESOL learners, then come to the library and talk about it in a relaxed, fun environment. In a friendly atmosphere you have a chance to meet new people, learn about different cultures and practice speaking in English. We all read the same short book, provided by Book Discussion Scheme and written in English.

## SPECIALIST BOOK CLUBS:

### Korean Book Club

#### Upper Riccarton Library

Second Friday of the month, 6pm–7pm

### Spanish Book Club

#### Upper Riccarton Library

Second Tuesday of the month, 6pm–7pm

### Polish Book Club

#### Tūranga

Auahatanga | Creativity, Level 4

Third Sunday of the month, 11am–noon

### Queer Book Club (Ages 16+ years)

#### Tūranga

Facilitation Space, Auahatanga | Creativity, Level 4

Last Monday of each month, 6pm–7pm

## Dewey Book Group

Each month, read a non-fiction book of your choice on a set theme. Over the year we'll read across the entire Dewey decimal spectrum!

**Booking required**

### **Tūranga**

Tūhuratanga | Discovery, Level 3

Last Wednesday of the month, 6pm–7pm

## An Alternative Book Group

A book group for adults who "read" in alternative formats. Join us to discuss your last read, favourite narrator or discover something new. Alternative formats include: ebooks, eAudiobooks, audiobooks or Large Print.

**Free, no booking required**

### **Upper Riccarton Library**

Third Wednesday of the month, 10am–11.30am

## Te Kāhui Ohua

This monthly reading group focuses on books housed in our Ngā Pounamu Māori Collection. Each month you'll choose any book from the collection to read – fiction or nonfiction, in English or Te Reo – and share your reads with the rest of the group.

**No registration or preparation is required**

### **Tūranga**

Auaha Hīhī | Spark Place,

He Hononga | Connection / Ground Floor

Last Friday of the month, 5.30pm–6.30pm (not December)

## Shared Reading

Come and join our reading group with a difference. Shared reading is an opportunity to listen to a short story and a poem as a group and then break it down and discuss it. Share your thoughts – how it made you feel, how you interpreted it, did you enjoy it?

Discover some interesting and thought-provoking reading led by one of our library staff.

**Ages 16+ years**

### **Tūranga**

Auahatanga | Creativity / Level 4

Wednesdays, 11am–noon

### **Linwood Library**

Mondays, 10.30am–11.30am

# Summertime Reading Challenge

✿ Read/Pānuihia ✿  
and be in to win!

Fill out this challenge card  
and drop at your local library.



Entries open until 31 January 2025.

Find out more

[christchurchcitylibraries.com](http://christchurchcitylibraries.com)

Kia ora

This summer I have completed these challenges:

- Read a book in te reo Māori
- Write a letter to a friend describing an adventure
- Watch a movie based on a book
- Listen to a story
- Turn off the lights and read a book by torchlight
- Find and read a book written or illustrated by Gavin Bishop
- Tell your whānau about a favourite book
- Read to a pet or soft toy
- Read a book about a famous person
- Try out a craft, experiment, or recipe from a book

Here are my favourite summer reads:

---

---



## Summertime Reading Challenge

Christchurch City Libraries

Ngā mihi

Name

Age

Contact number

Library



## Gavin Bishop Treasury and Summertime Reading Launch

Patron of Summertime Reading, author/illustrator Gavin Bishop launches his Treasury in time to celebrate Summertime Reading.

A fun family affair with the Court Jesters!

**Free, no booking required**

### **Tūranga**

Tautoru / TSB Space, Hapori | Community, Level 1  
Sunday 8 December, 11am–12.30pm

## Summertime Reading Book Quiz

Get the whānau together and test your book knowledge! Prizes to be won and fun to be had.

**Ages 8–12 years**

**Free, booking required for your team**

### **Tūranga**

Tautoru / TSB Space, Hapori | Community, Level 1  
Thursday 30 January, 10am–1pm



## Stories in the Park

Redwood Library has the perfect setting to host Stories in the Park, right on our doorstep! Enjoy the summer and come and listen to stories and sing some songs! This is a family event where you can play games, visit our mobile library van, make a craft, enjoy a Story Walk and enjoy a delicious sausage sizzle all in our local Redwood Park.

Don't forget to bring your picnic blanket and your sunscreen! It's a great chance to enter the Summertime Reading Challenge and be in to win!

**Note:** In the event of adverse weather Stories in the Park will be cancelled. Please check our website and Facebook pages from 8am on the day of the event.

**Free, no booking required**

### **Redwood Park**

Saturday 18 January, 11am–12.30pm



## Picnic in the Park

Bring your blankets, bring your whānau, and come and join us at Barrington Park for a picnic in the summer sunshine! There will be fun and games with a Storywalk, giant board games and crafts.

### **Barrington Park**

Friday 24 January, 11am–12.30pm

## Summertime Reading at the Pool

Come and join us at your favourite water spot at Te Hāpua: Halswell Summer Pool for summertime stories and games poolside.

Enjoy stories, outdoor games, crafts and more. We will also have a swim safety talk from one of our Swimsmart team along with some fun gear to try on.

Spot prizes and fun for the whole family.

This event is held in the pool area, so normal pool entry fee applies. (Note: In the event of bad weather, this session will be held inside the library.)

### Te Hāpua: Halswell Summer Pool

Thursday 23 January, 2pm–3pm

## Music with Michal

Join Music with Michal for a fun, upbeat, and interactive music show designed for young children. The show is filled with Michal's popular hit songs, as well as beloved children's classics that kids will enjoy singing along to.

**Booking required**

### Tūranga

Tautoru / TSB Space, Hapori | Community, Level 1  
Thursday 23 January, 10am and 11.30am



## My Book Bag

Kickstart your holidays with a bag of books curated just for you! Looking for something new and fresh to read this summer? Whether you're after your next favourite work of fiction, or to learn something new from our nonfiction collection, if you tell us what you like to read we'll find some things that we think you'll enjoy!

My Book Bag is the perfect way to discover new series and hidden gems!

**Ages 12+ years**

**Free, booking required**

[See website for details](#)



## Summer Fun @ Riccarton House

Join us for a summer adventure at Riccarton House.

### Riccarton House

Wednesday 22 January, 10am–2pm  
Storywalks at 11am and 1pm



## Join Christchurch City Libraries at the Council Summer Pool Parties

Visit the library van to get involved with the Summertime Reading Challenge! See [ccc.govt.nz/poolparties](http://ccc.govt.nz/poolparties) for info.

### The Giant Summer Season Kick Off

Enjoy a day of fun on giant slides and inflatables for kids of all ages.

**Jellie Park**, 8 December

### Summer Splash

Bounce, slip, and slide on massive inflatables and bouncy castles to stay cool all afternoon.

**Waltham Pool**, 12 January

### Sports Day Pool Party

Meet your favourite Rams players and dive into action on our lineup of giant inflatables.

**Jellie Park**, 8 February

## Ōtākaro – a place to play!

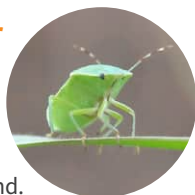
Come play with libraries staff, CCC park rangers and Canterbury Museum at Dallington Landing! Hang in a hammock with a book in the chill zone or run and play beside the river in the fun zone.

### Dallington Landing

Tuesday 28 January, 10am-2pm

## Books and bugs at Brooker

Join CCC parks and libraries teams, Avon-Otakaro Forest Park, Canterbury Museum and Green Lab in a bug hunt! Engage your senses and explore stories of nature at Brooker Ave forest and playground.



### Brooker Ave forest and playground

Tuesday 21 January, 10am-3pm

## Red-zone book-nook

Come hang in a hammock and borrow a book from our red-zone book-nook throughout the last two weeks of January.

### Red Zone

Monday 20th January– Friday 31 January

Please see website for details.

# Creative and connected



## Join our regular clubs!

Knit 'n' Yarn

Rummikub Club

Social Games and Cards Club

Scrabble Club

Mahjong Group

Find out where and when:

[christchurchcitylibraries.com](http://christchurchcitylibraries.com)

## Art on the Rooftop

Join us for two afternoons of art exploration:

Session 1: Charcoal and Pastel

Session 2: Watercolours

**\$5 per session, booking required**

### Tūranga

Auahatanga | Creativity | Level 4

Thursday 23 January, 2pm–4pm

Sunday 26 January, 2pm–4pm



## Kawhe and Kōrero

Want to practise your reo? Drop in for a cuppa and build your kōrero skills with fellow learners.

This is a casual and supportive programme for adults who want to build confidence speaking te reo Māori.

### New Brighton Library

Thursdays, 10am–11am

## Me Kōrero Tātou

Let's speak and build our te reo Māori skills together!

Join us at Shirley Library for a friendly kōrero, share your learning and learn from others – everyone is welcome, at any stage of your te reo Māori journey.

### Shirley Library

Thursdays, 1.30pm–2.30pm



## Sketch @ Tūranga

Drop in to our monthly creative sketch session. Materials provided but you're welcome to bring your own.

### Tūranga

He Hononga | Connection, Ground Floor

Third Sunday of the month, 2pm–4pm

## Not Just Cards – Social Games Club

Join us on the first Wednesday of each month to play cards and boardgames at the Upper Riccarton Library. Some large print and low vision formats available at this location.

**Free, no booking required**

### Upper Riccarton Library

First Wednesday of the month, 10am–11am

## Let's have a cuppa

Get to know your community and library team with a cup of tea, a biscuit and a chat.



### **Linwood Library**

Friday 6 December, 10am–noon

### **Fendalton Library**

Wednesday 18 December, 10.30am–noon

Wednesday 29 January, 10.30am–noon

Wednesday 26 February, 10.30am–noon

### **Spreydon Library**

Tuesday 10 December, 10.45am–11.45am

Tuesday 11 February, 10.45am–11.45am

## Creative Stitching

Join us to explore creative mending, upcycling, repurposing and more!

We'll help you breathe new life into your old, worn-out, or forgotten materials. Whether it's transforming a bedsheet into a stylish tote bag or using visible mending techniques to repair a beloved but holey top.



**Free, drop-in session. No booking required.**

### **Te Hāpua: Halswell Centre**

Third Wednesday of each month starting in February,  
1.30pm–3pm

## Cuppa and Craft

Join us for a weekly social morning at the library with a free hot drink and biscuits. Make yourself comfortable and spend some time talking to other members of the community and your local librarians.

Feel free to bring your own portable craft project (knitting, crochet, models etc) to work on or to show others.

### **Aranui Library**

Fridays, 10am–11.30am



## Craft Snippets at Upper Riccarton Library

A bimonthly event where a guest artisan speaks about their crafting journey followed by Q&A. We look at the latest crafting books and discuss what's happening in our city's crafting scene.

### Upper Riccarton Library

Wednesday 29 January, 6.30pm–7.30pm



## Craft Collective

Come and get crafty with us.

Join in this free craft session and try your hand at something new each month. No prior skills or knowledge required but a 'give it a go' attitude a must!

**All materials provided. No booking required.**

### Shirley Library

First Wednesday of the month,  
11am–noon (not in January)



## Crafting for Wellbeing

Foster your creativity and resilience while learning a new skill. A different craft each month will be explored using sustainable materials. Drop in and relax and enjoy some 'me' time.

### Tūranga

Tūhuratanga | Discovery, Level 3

*Pop-up Christmas cards:*

Saturday 21 December, 2pm–3.30pm

*Jewellery:*

Saturday 16 February, 2pm–3.30pm

## Art for Adults

Art for Adults is a drop-in social and creative group that meets every week to draw and paint at your own pace. Meet new people, have conversations and make art. Any skill level welcome and every session has a theme. Materials supplied!

**Ages 18+ years**

**Free**

### **Aranui Library**

Mondays, 10am–noon

(during term time starting second week)



## Craft Club

Bring your own craft project and meet up with others in the community when you drop in.

### **New Brighton Library**

Tuesdays, 1pm–2pm

Fridays, 11am–1pm

## Crafty Connections Crew

Come and create in a fun and relaxed environment on the first Thursday of the month. Bring along your craft to work on and get to know some fellow crafters.

**Ages 12+ years**

**Free, no booking required**

### **Fendalton Library**

First Thursday of the month, 6.30pm–7.30pm

## Crafty Sundays

Bring your latest craft project and connect with other enthusiasts.

### **Tūranga**

Café Corner, He Hononga | Connection, Ground Floor

Every Sunday 10am–noon



## Euchre Club

All ages and skill levels welcome! Come along and play the trick-taking card game Euchre with experienced players.

**Free, no booking required**

### **Linwood Library**

Mondays, 1pm–3pm



## English Conversation Club

Drop in to our supportive Conversation Club to practice your English. While not a class, this is a good opportunity to chat with others and meet new people. Great for ESOL learners.

### **Tūranga**

Third Tuesday of the month, 5pm–6pm

First Friday of the month, 5.30pm–6.30pm

### **Upper Riccarton Library**

Thursdays 11am–noon

### **Fendalton Library**

Wednesdays, 10am–11am

### **Matatiki Hornby Centre**

Mondays 2pm–3pm

### **Papanui Library**

Thursdays, 2pm–3pm



## Mandarin Conversation Club

The Mandarin conversation group is a drop-in group where anyone is welcome to come and practice conversations in Mandarin, in a friendly and relaxed environment.

This is not a class, but an opportunity to talk with others in Mandarin and to meet new people in the community.

**Free, no booking required**

### **Fendalton Library**

Wednesdays, 5.30pm–6.30pm



## Spanish Conversation Club

The Spanish Conversation Club is a relaxed drop-in group where everyone is welcome to practice speaking Spanish in a friendly atmosphere. It's not a formal class, but rather an opportunity to engage in Spanish conversations and connect with others in the community.

**Ages 13+ years**

**Free, no booking required**

### **Matatiki Hornby Centre**

First Tuesday of the Month, 5pm–6pm

# eKnow how



[christchurchcitylibraries.com](http://christchurchcitylibraries.com)



## Technology Help Drop-in Sessions

Do you need help using your computer, smartphone, iPad, or tablet?

Come along to our drop-in sessions for help with email, searching the internet, using the library catalogue, eBooks, and general computer queries.

Bring your laptop, tablet, or smartphone, or use one of our computers for help with anything digital.

**Free, no booking required**

These sessions happen across the city. Check our website or call us on 03 941 7923 to find one near you.

## Techmate Drop-in

Local tech experts Techmate are here to help with your devices and general technology needs.



### **Aranui Library**

Every second and fourth Monday, 10am–noon

### **Fendalton Library**

Mondays, 10am–noon

### **Linwood Library**

Tuesdays 11am–1pm



## Create Together: Whānau Drop-in Workshop

This monthly drop-in session is an opportunity for families to learn together and explore our creative STEAM equipment. We will have a different creative focus each session. Check our web calendar to see what we are making before the session!

**Children under 14 must be accompanied by an adult for the duration of their visit.**

**This is a free event but there may be some optional material costs.**

### **Te Hāpua: Halswell Centre**

Auahatanga Creative Space

First Wednesday of the month, 3.30pm–5pm

## Introduction to the Media Conversion Station

Are you interested in converting your photographs, videos, cassettes, film negatives, slides or floppy disks into digital files? Join this session to find out more about Tūranga's media conversion station, including an overview of the equipment, some opportunities for hands-on learning and information about how to book a self-service session to begin your digitisation project. Start converting your precious memories into digital files, ready for viewing and sharing!

**Free, booking required**

### Tūranga

Auahatanga | Creativity / Level 4

See website for details.



## GenConnect

Got questions about technology, apps or social media? Come along to a free GenConnect session, with high school students ready to help with all your technology questions. During term time only.



### Upper Riccarton Library

Thursdays, 1pm–1.45pm

## Direct to Garment Printer Drop-In

Come along to our Drop-In for the Direct to Garment Printer at Aranui Library! The Direct to Garment Printer is a device that prints directly on to fabric and garments. Bring in your own light-coloured garment/fabric and a design to get started. \$5.50 for each item you print on with a limit of 5 per session. Use of this printer is always supervised.



**NOTE:** The Direct to Garment Printer is readily available outside of this drop-in time.

### Aranui Library

Fridays, 2pm–4pm

# Auahatanga – Creative Spaces

Where everyone can learn, make and design. Full of creative technologies, including 3D printers, badge makers, direct-to-garment printers, laser cutters, sewing machines, vacuum formers, vinyl cutters and much more. These spaces are staffed by a friendly crew of specialists, and are hubs for collaboration and self-directed learning. Come along to one of the sessions listed below to embark on or continue on your creative journey!

## Tell me more!

- Sessions are free to attend, however materials can be purchased as used on the day.
- Check our calendar for pop-up activities in the holidays.
- Children under 14 must be accompanied by an adult.
- Our services are intended to support prototyping rather than commercial production, sizes and limits apply.
- Technologies and materials vary by location.

For more information visit

[my.christchurchcitylibraries.com/creative-resources](http://my.christchurchcitylibraries.com/creative-resources)

### **Auahatanga – Matatiki Hornby Centre**

Monday and Tuesday – see website for details.

### **Auahatanga – New Brighton Library**

#### ***Creative Bites***

Fridays, 2pm–4.30pm, term time only

Please see website for details of available activities.

### **Auahatanga – Te Hāpua: Halswell Centre**

Wednesdays, 10am–11.30am

Fridays, 3pm–4.30pm

### **Auahatanga – Tūranga**

Auahatanga | Creativity, Level 4

All sessions are term time only

#### ***Creative Midday***

Tuesdays, 11am–2pm

#### ***Creative Evening***

Wednesdays, 6pm–7.30pm

#### ***Open Studio (13–17 years)***

Fridays, 4pm–5.30pm

#### ***Open Studio – General interest***

Sundays, 10.30am–12.30pm

# Christmas at the Library

## Whakanuia Kirihimete

It's that time of year again when we celebrate Christmas! Join Māori & Multicultural Library Services for Christmas Card Making and Pasifika decorations at the following Libraries.

**Free, drop in sessions**

**Recommended for ages 7 years and older –  
younger children must be accompanied by an adult**

### **Aranui Library**

Monday 16 December, 10am–11.30am and 1pm–2.30pm

### **Te Hāpua: Halswell Centre**

Tuesday 17 December, 10am–11.30am and 1pm–2.30pm

### **Upper Riccarton Library**

Wednesday 18 December, 10am–11.30am and 1pm–2.30pm

### **Tūranga**

Big Table, He Hononga | Ground Floor

Thursday 19 December, 10am–11.30am and 1pm–2.30pm

## Elves on the Shelves

We have received a very exciting letter from the North Pole – elves will be visiting Hapori this December! They will be having fun exploring our collection and helping out with our Summertime Reading Challenge, so nau mai, haere mai – come in and see what they get up to each day.

### **Tūranga**

Hapori | Community, Level 1

1–24 December



## Toy Sleepover at the Library

Our Christmas Elves are looking for some new friends. Your soft toy is warmly invited to a sleepover on Hapori with our two visiting Christmas Elves. Drop your toy to our librarians by 4pm on Friday 13 December, then collect your toy at the Christmas Storytime at 2pm on Saturday!

**Booking essential**

### **Tūranga**

Hapori | Community, Level 1

Friday 13 December – Saturday 14 December



## Christmas Storytime

Join us for Christmas stories, music and games. Feel free to dress up! This Storytime will be followed by a Christmas craft at Family Makerspace.

### Tūranga

Hapori | Community, Level 1

Saturday 14 December, 2pm–2.30pm

## Personalised Christmas Gifts

Turn your photo, drawing or digital design into a personalised gift! We will use our badge-maker to create fridge magnets, keyrings, and badges. You can draw or create an image during the session or bring a design or photo with you (you can print it out at the library).

**Cost: \$1 per item**

**All ages, younger children will need adult supervision**

### Te Hāpua: Halswell Centre

Auhatanga Creative Space

Wednesday 11 December, 3.30pm–5pm

## Sending Love from the Library

Come along to make a Christmas card for Sending Love. Write a special message in your card and put it in our Sending Love box, these Christmas cards will be distributed to people within our communities who may be experiencing loneliness.

Our Sending Love box will also be available in the library from mid-November for those who would like to contribute a card from home.

**All materials will be provided.**

**Free, no booking required**

### Send love from your local library

Please see website for details.



## Crafting cards with Ron Te Kawa

Join fabric artist Ron Te Kawa to make sparkly creations for your Christmas cheer!

**Free, no booking required**

### Tūranga

He Hononga | Connection, Ground Floor

11 December, 11am–12.30pm

# Heritage



[christchurchcitylibraries.com](http://christchurchcitylibraries.com)

Check out the Mobile Discovery Wall as it moves around our community libraries over the next few months.

**December** Matuku Takotako: Sumner Centre

**January** Parklands Library

**February** Shirley Library



## Beginners Guide to Local History

Are you interested in learning about the history of Ōtautahi Christchurch? Come and join our Local History librarians as we explore topics like our Māori heritage, European immigration and settlement, and the people, places and events that make our city unique.

We will explore some of the gems in our collection, including our archives, maps, information on our website, thousands of images, digitised diaries, book recommendations and more.

This is a great way to add some context to your family history research, or just to delve deeper into the area you live, work or play in.

This course uses online resources, so basic computer skills are required.

**\$15, booking required**

**You will be booked on all six sessions**

### **Tūranga**

Wāhi Whakaako / Teaching Room on  
Tuakiri | Identity, Level 2

Wednesdays from 12 February–19 March, 2pm–4pm

## Family History

Bring your family history questions to our regular drop-in events. A member of the Canterbury branch of the New Zealand Society of Genealogists will be on hand to help.

### **Shirley Library**

First and third Saturdays of the month, 10am–noon

### **Upper Riccarton Library**

Wednesdays, 11am–1pm

## Rangahau a Iwi – Iwi Research

Are you interested in Iwi history and research? Come along to our Iwi Research events where each month we highlight a new Iwi. Our Pou Kohikohinga Māori will be around to share insights, resources and key texts available in our collections.

**Free, no booking required**

### **Tūranga**

Waruwarutū /Ngā Pounamu Māori,  
Tuakiri | Identity, Level 2

### **Ngāti Mahuta**

Tuesday 17 December,  
5.30pm–6.30pm

### **Ngāi Tahu**

Tuesday 16 December,  
5.30pm–6.30pm

### **Te Arawa**

Tuesday 18 February,  
5.30pm–6.30pm



## Māori Land Court Drop In Advisory Clinic

Do you have a Māori Land Court enquiry? Then this is for you!

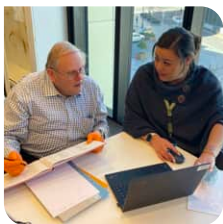
Staff from the Māori Land Court will be available at Tūranga to answer questions and provide advice on a range of enquiry types, from succession applications to land Trusts.

**Free, no booking required**

### **Tūranga**

Waruwarutū /Ngā Pounamu Māori,  
Tuakiri | Identity, Level 2

Every second Wednesday of the month, noon–2pm  
(not January)





## Pou Kohikohinga in Residence – Meet our Māori Collection Specialists

Do you have questions about the Ngā Pounamu Māori Collection? Do you have kaupapa Māori research questions or need help looking into your whakapapa? Our Māori Collection Specialists are available to answer any of your queries.

### **Fendalton Library**

Tuesday 10 December, 9am–5pm

### **Spreydon Library**

Wednesday 15 January, 10am–5pm

### **Matatiki Hornby Centre**

Friday 21 February, 9am–5pm



Museum and Rolleston Statue, Christchurch postcard

## Heritage Highlights: Canterbury Museum – Past, Present, Future

Sarah Murray, Canterbury Museum's Deputy Director, will give an illustrated talk about the Museum's major redevelopment of its Rolleston Avenue site. She will discuss the evolution of the Museum's building complex over the last 150+ years, the numerous reasons behind the need for the redevelopment, and the massive project to move the collection and staff to offsite storage and offices in the space of just 8 months. The talk will conclude with some sneak peeks at what the new Museum will look like when it reopens in 2028.

**Free, booking required. Come early for a cup of tea.**

### **Tūranga**

Auaha Hīhī / Spark Place,

He Hononga | Connection, Ground Level

Wednesday 26 February, 10.30am–11.30am



Rountree family by caravan, 1957-1960

## Canterbury Stories

Explore the changing scenes of Canterbury at [Canterburystories.nz](http://Canterburystories.nz). We now have more than 81,000 images from the 1860s through to the 2020s! You can also create an account to add comments to images and to create your own sets of images that you can share!

Christchurch City Libraries, CCL-PH22-138, CC BY-NC-ND 4.0



Family outing

canterburystories.nz - CCL-PH22-098a

## Find your Australasian Ancestors

A dive into useful resources for tracking your ancestors in New Zealand and Australia. Join our Family History librarians for a four-week course. Bring as much as you already know of your Australasian forebears and we will assist you to fill in the gaps.

**Ages 16+ years**

**\$15, booking required**

### **Tūranga**

Wāhi Whakaako / Teaching Room/ Tuakiri Level 2

Thursdays, 20 and 27 February, 6 and 13 March, 2pm–4pm

# Exhibitions

## NEW YEAR NEW WISHES 新年 新期望

Celebrating the vibrant spirit of Chinese folk arts in New Year traditions.

展现农历新年传统中丰富多彩的中国民间艺术精神。

18 December 2024–23 February 2025  
Tūranga

**FREE**



## New Year | New Wishes

### 新年 新期望

#### Celebrating the Vibrant Spirit of Chinese Folk Arts in New Year Traditions

展现农历新年传统中丰富多彩的中国民间艺术精神。

Discover the vibrant history of Chinese folk art through the traditions of shadow puppetry, New Year Pictures, and clay sculptures. Uncover their origins and significance in Chinese New Year celebrations and explore their vital role within the New Zealand Chinese community.

#### Tūranga

Te Pito Huarewa/ Southbase Gallery,  
Tuakiri | Identity, Level 2  
18 December – 23 February



## Inside Out

### Young people's designs for public artworks in miniature

SCAPE Public Art's Inside Out competition invites local students to design sculptures and murals. See the 3D models of the designs by competition finalists, all made by these talented young people at South Library.

Part of the SCAPE Public Art Season.

#### Tūranga

He Hononga | Connection, Ground Floor  
20 November – 15 December 2024

**SCAPE**  
**PUBLIC**  
**ART**



## Picture Me

Celebrating the power of children's books to shape identity and foster international connections, featuring work by international and New Zealand illustrators.

### **Linwood Library**

30 November – 17 December 2024

### **Upper Riccarton Library**

9 – 30 January 2025

**Please see website for other locations**

## hArt and Home – The ŌCHT Tenant Art Show

Celebrating the art and creativity of Ōtautahi Community Housing Trust tenants. From first time exhibitors to seasoned artists, their work explores everything from personal aesthetic to our shared triumphs and challenges. With the support of The White Room Creative Space.

### **Tūranga**

He Hononga | Connection, Ground Floor  
5 February – 2 March 2025



Ōtautahi  
community  
housing  
trust



## Canterbury Museum Touring Exhibitions – Discover treasures in your library

### **Ancient New Zealand**

Learn about how scientists are piecing together the ancient past through a treasure trove of fossils found in North Canterbury.

### **Tūranga**

Tūhuratanga | Discovery, Level 3  
Until 18 March 2025



 **Canterbury  
Museum**



Christchurch City Libraries Legacy Photograph Collection –  
KPCD05-0053

A cycling novelty [1898]

## Tuakiri Investigates: Eccentric Christchurch

This summer the Tuakiri team investigates Eccentric Christchurch, looking at some of the unusual people, places and events from the 19th and 20th centuries that made this city special.

Find out more about dubious purveyors of health or religious panaceas, prolific writers of letters to the editor, peripatetic band rotundas and bicycle bands, and Jack the ‘saucy’ Emu.

### **Tūranga**

Tuakiri | Identity, Level 2

Opens Saturday 25 January

*Imagination  
Station*

## *After School Classes at your local library!*

Imagination Station now offers after school classes at four local libraries including Upper Riccarton, South, Fendalton & Tūranga.



Come explore, create, and have fun  
with Imagination Station!

[www.imagination-station.org.nz](http://www.imagination-station.org.nz)



# Christchurch City Libraries

Connecting people,  
inspiring discovery,  
enriching communities.

**Stories come to life at the library.**  
Nau mai, tauti mai.

Call us or find out more at

[christchurchcitylibraries.com](http://christchurchcitylibraries.com)

