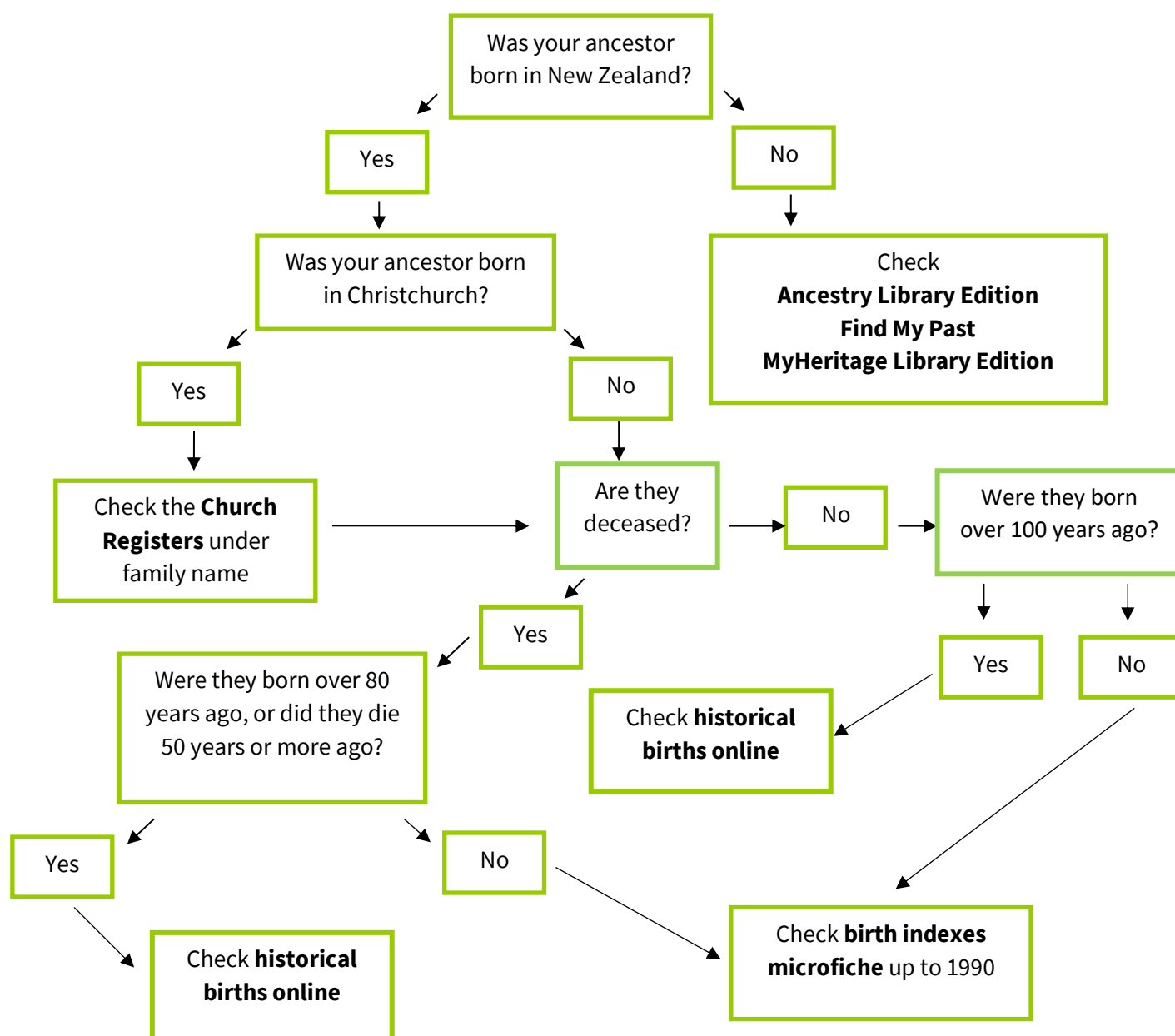


Family History research starter - Birth



Ancestry and **Find My Past** are databases available on any library public PC, as well as the Family History PCs. Family History PCs are on Tuakiri | Identity, Level 2 in Tūranga, at Fendalton, Upper Riccarton, Shirley, Lyttelton and Te Hāpua: Halswell Centre. You can use your own device if you are using library wifi and access the databases through the library's website.

MyHeritage library edition is a database that is available on all public PCs and **from home** using library card and PIN/password.

Church Registers are held in the wooden drawers on Tuakiri | Identity, Level 2 in Tūranga. They are filed alphabetically by family name, with details of baptisms, marriages and burials.

Birth indexes microfiche are held on Tuakiri | Identity, Level 2 in Tūranga. They are arranged by year of registration, then alphabetically by family name.

Historical births online are on the Births Deaths and Marriages website.

<https://www.bdmhistoricalrecords.dia.govt.nz/>