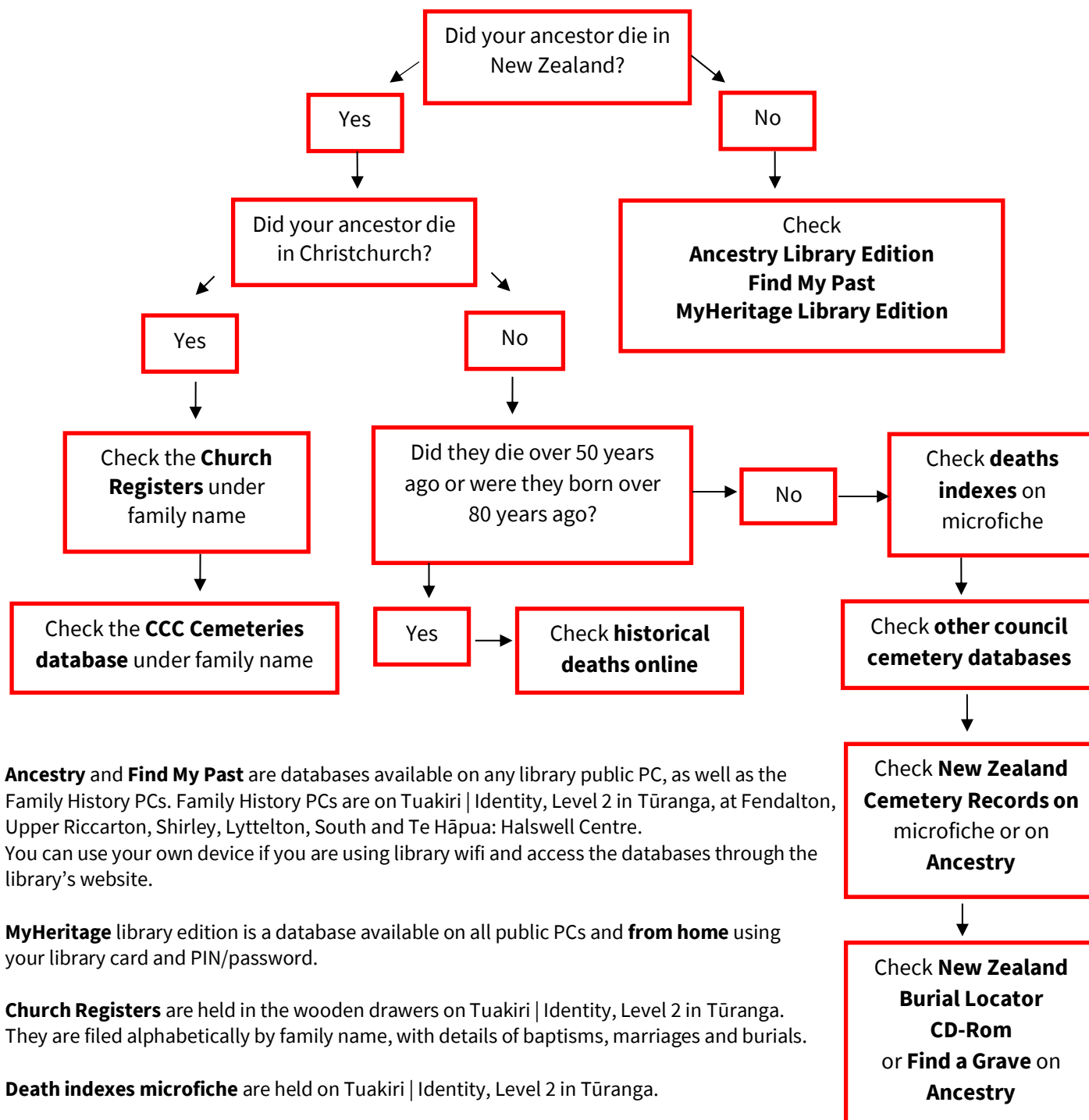


# Family History research starter – Death



**Ancestry** and **Find My Past** are databases available on any library public PC, as well as the Family History PCs. Family History PCs are on Tuakiri | Identity, Level 2 in Tūranga, at Fendalton, Upper Riccarton, Shirley, Lyttelton, South and Te Hāpua: Halswell Centre. You can use your own device if you are using library wifi and access the databases through the library's website.

**MyHeritage** library edition is a database available on all public PCs and **from home** using your library card and PIN/password.

**Church Registers** are held in the wooden drawers on Tuakiri | Identity, Level 2 in Tūranga. They are filed alphabetically by family name, with details of baptisms, marriages and burials.

**Death indexes microfiche** are held on Tuakiri | Identity, Level 2 in Tūranga.

**Historical deaths online** are on the Births Deaths and Marriages website. <https://www.bdmhistoricalrecords.dia.govt.nz/>

**CCC Cemeteries database** is available online at <http://heritage.christchurchcitylibraries.com/Cemeteries/>

**Other council cemetery databases** available online are listed at <http://christchurchcitylibraries.com/Resources/NewZealand/History/FamilyHistory/Cemeteries/index.asp>

**New Zealand Cemetery Records up to 2009** – are microfiche held at on Tuakiri | Identity, Level 2 in Tūranga

**New Zealand Burial Locator CD-Rom** – is loaded onto all Family History PCs.