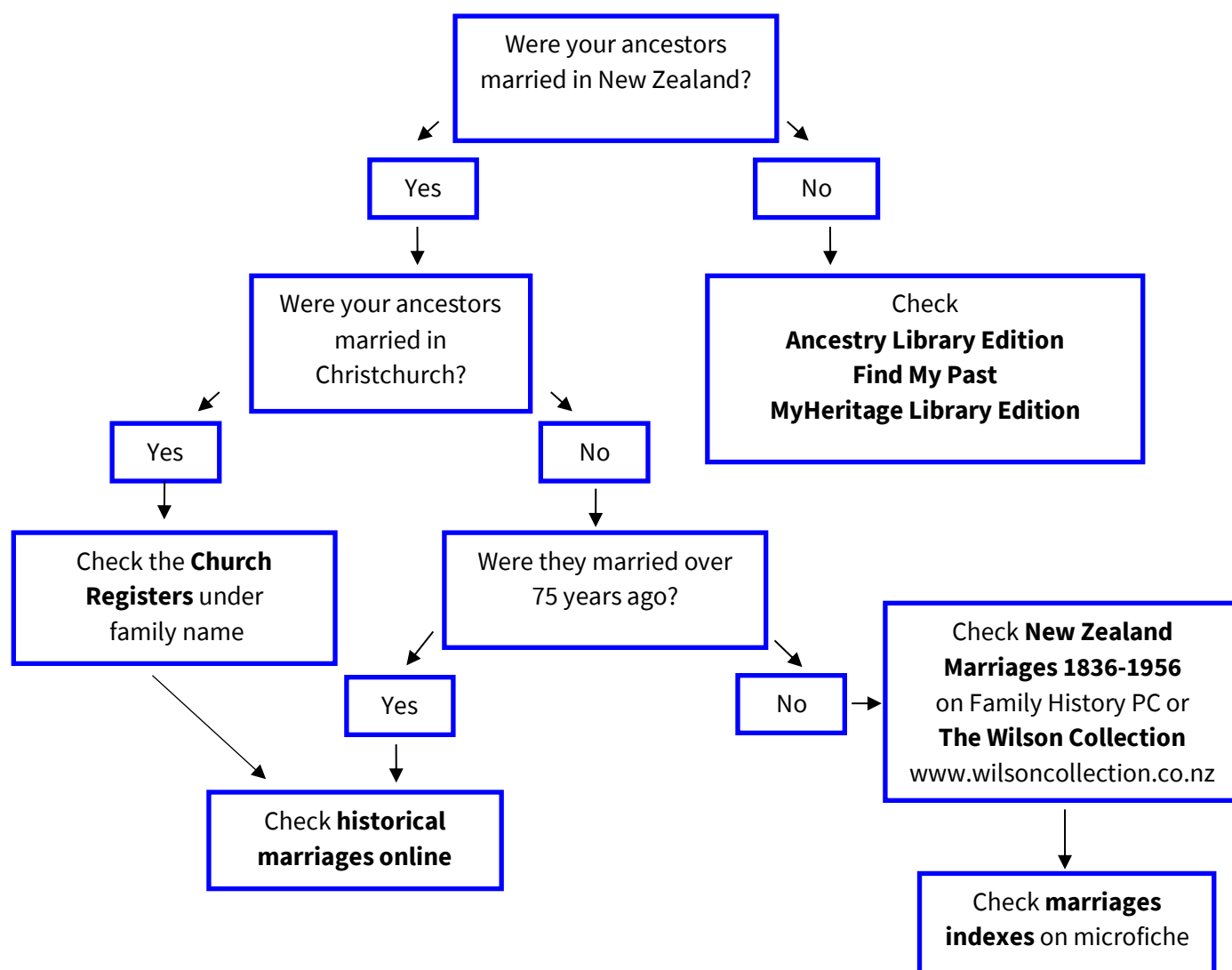


# Family History research starter - Marriage



**Ancestry** and **Find My Past** are databases available on any library public PC, as well as the Family History PCs. Family History PCs are on Tuakiri | Identity, Level 2 in Tūranga, at Fendalton, Upper Riccarton, Shirley, Lyttelton and Te Hāpua: Halswell Centre.

You can also use your own device if you are using library wifi and access the databases through the library's website.

**MyHeritage** library edition is a database that is available on all public PCs and **from home** using your library card and PIN/password.

**Church Registers** are held in the wooden drawers on Tuakiri | Identity, Level 2 in Tūranga. They are filed alphabetically by family name, with details of baptisms, marriages and burials. The most detailed marriage record is filed under the husband's family name.

**New Zealand Marriages 1836-1956** is a CD-ROM that has been loaded onto all Family History PCs.

**The Wilson Collection** website has marriages from 1839 to 1960 and can be accessed from home.

**Marriage indexes microfiche** are held on Tuakiri | Identity, Level 2 in Tūranga. They are arranged by year of registration, then alphabetically by family name. You are able to search for either bride or groom.

**Historical marriages online** are on the Births Deaths and Marriages website.

<https://www.bdmhistoricalrecords.dia.govt.nz/>

